

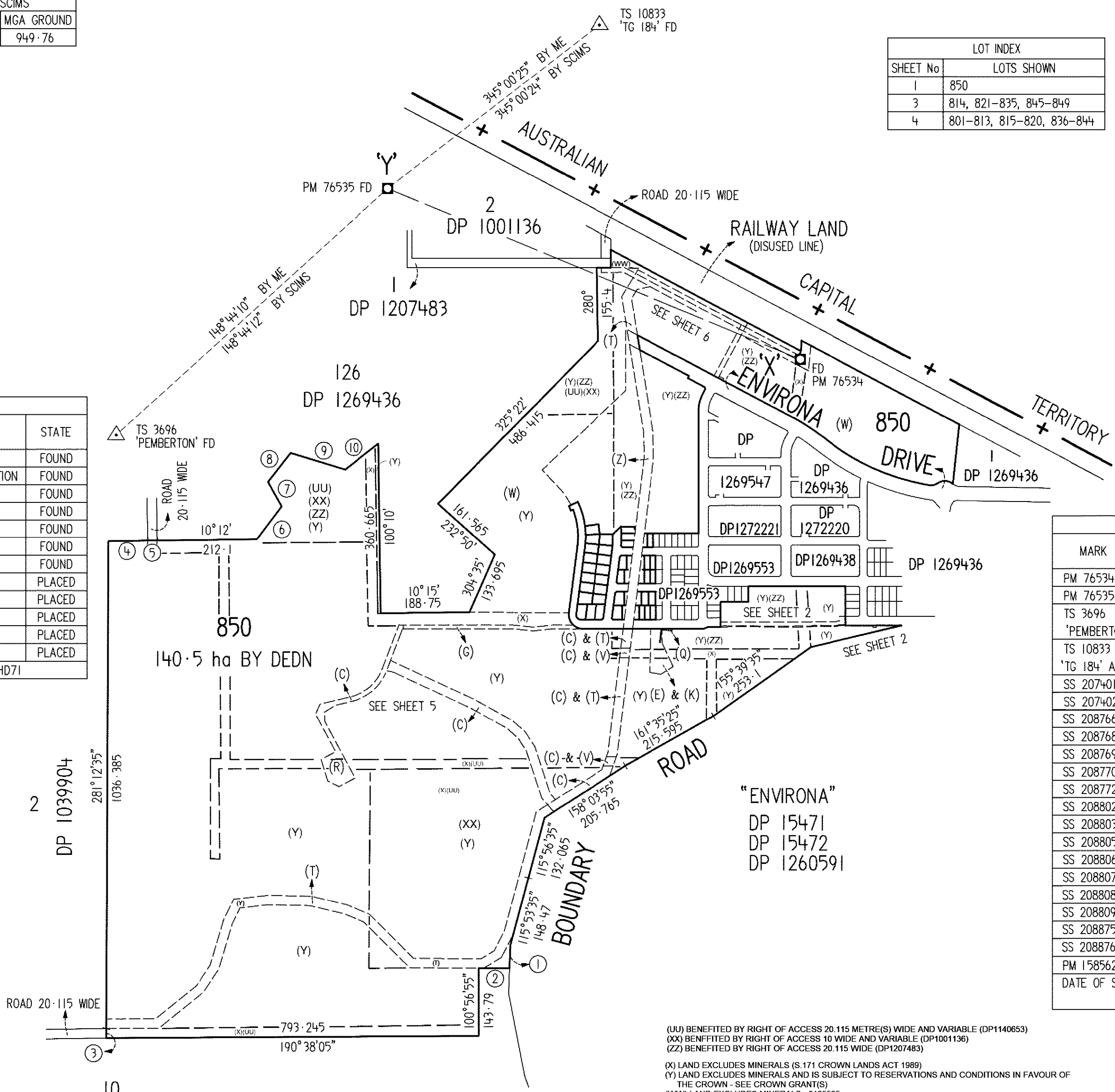
CONTROL MARK CONNECTIONS					
CONTROL MARKS		BY ME		BY SCIMS	
FROM	TO	BEARING	DISTANCE	BEARING	MGA GROUND
PM 76534	PM 76535	213°25'41"	949.745	213°25'41"	949.76
PM 76534	SS 207401	108°17'30"	148.025		
SS 207401	SS 207402	229°55'50"	71.99		
SS 207402	SS 208772	220°08'	118.925		
SS 208772	SS 208770	125°33'45"	78.59		
SS 208770	SS 208769	92°43'25"	98.36		
SS 208769	SS 208768	109°11'30"	95.805		
SS 208768	SS 208766	90°23'55"	74.275		
SS 208766	SS 208806	174°38'10"	90.74		
SS 208806	SS 208805	97°52'45"	80.405		
SS 208805	SS 208803	109°48'	73.85		
SS 208803	SS 208809	186°44'55"	119.93		
SS 208809	SS 208875	196°55'45"	74.225		
SS 208875	SS 208876	285°37'45"	173.265		
SS 208876	SS 208807	28°38'15"	89.63		
SS 208807	SS 208806	5°56'10"	101.34		
SS 208807	SS 208808	116°24'20"	73.72		
SS 208808	SS 208809	105°10'15"	82.36		
SS 208808	SS 208805	11°07'30"	124.905		

HEIGHT SCHEDULE					
MARK	AHD VALUE	CLASS	PU	HEIGHT DATUM VALIDATION	STATE
PM 76534	634.7	C	0.03	SCIMS ADOPTED	FOUND
PM 76535	669.98	C	0.03	FROM SCIMS - DATUM VALIDATION	FOUND
SS 208763	647.354	LD	N/A		FOUND
SS 208802	656.928	LD	N/A		FOUND
SS 208803	661.513	LD	N/A		FOUND
SS 208805	659.656	LD	N/A		FOUND
SS 208806	657.418	LD	N/A		FOUND
SS 208807	665.162	LD	N/A		PLACED
SS 208808	668.142	LD	N/A		PLACED
SS 208809	671.174	LD	N/A		PLACED
SS 208875	676.386	LD	N/A		PLACED
SS 208876	670.072	LD	N/A		PLACED

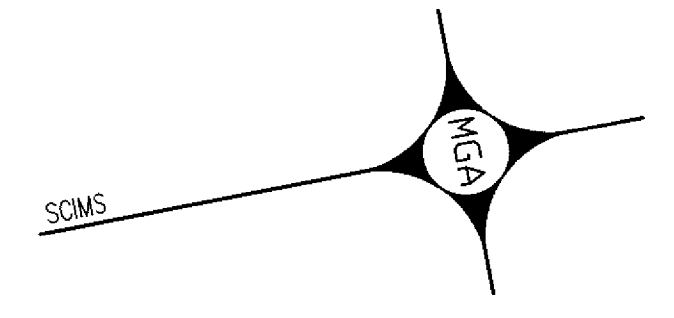
DATE OF SCIMS AHD VALUES 07-04-2022 HEIGHT DATUM: AHD71

HEIGHT DIFFERENCE SCHEDULE			
FROM	TO	HEIGHT DIFFERENCE	METHOD
PM 76534	PM 76535	+35.283	DIFFERENTIAL LEVELLING
PM 76534	SS 208806	+22.718	DIFFERENTIAL LEVELLING
SS 208806	SS 208805	+2.238	DIFFERENTIAL LEVELLING
SS 208805	SS 208803	+1.857	DIFFERENTIAL LEVELLING
SS 208803	SS 208809	+9.661	DIFFERENTIAL LEVELLING
SS 208809	SS 208875	+5.212	DIFFERENTIAL LEVELLING
SS 208875	SS 208876	-6.314	DIFFERENTIAL LEVELLING
SS 208876	SS 208807	-4.91	DIFFERENTIAL LEVELLING
SS 208807	SS 208806	-7.744	DIFFERENTIAL LEVELLING
SS 208806	SS 208808	-3.032	DIFFERENTIAL LEVELLING
SS 208808	SS 208807	-2.98	DIFFERENTIAL LEVELLING
SS 208805	SS 208808	+8.486	DIFFERENTIAL LEVELLING
SS 208803	SS 208802	-4.585	DIFFERENTIAL LEVELLING
SS 208802	SS 208763	-9.574	DIFFERENTIAL LEVELLING
SS 208763	PM 76534	-12.654	DIFFERENTIAL LEVELLING

HEIGHT DATUM AHD71



LOT INDEX	
SHEET No	LOTS SHOWN
1	850
3	814, 821-835, 845-849
4	801-813, 815-820, 836-844



SHORT LINE TABLE		
LINE	BEARING	DISTANCE
1	102°56'25"	48.45
2	191°04'35"	65.235
3	280°38'	20.115
4	10°12'35"	84.98
5	10°14'15"	20.115
6	318°	87.39
7	252°	59.865
8	319°	77.99
9	28°	120.975
10	333°10'	89.985

COORDINATE SCHEDULE						
MARK	MGA COORDINATES		CLASS	PU	METHOD	STATE
	EASTING	NORTHING				
PM 76534	696 479.119	6 080 265.295	C	0.03	SCIMS	FOUND
PM 76535	695 955.924	6 079 472.669	C	0.03	SCIMS	FOUND
TS 3696 'PEMBERTON'	696 536.15	6 078 516.989	2A	0.02	SCIMS	FOUND
TS 10833 'TG 184' ACT	695 246.148	6 082 122.810	A	0.02	SCIMS	FOUND
SS 207401	696 619.659	6 080 218.837	C	N/A	CADAstral TRAVERSE	FOUND
SS 207402	696 564.567	6 080 172.496	C	N/A	CADAstral TRAVERSE	FOUND
SS 208766	696 814.841	6 079 999.185	C	N/A	CADAstral TRAVERSE	FOUND
SS 208768	696 740.569	6 079 999.702	C	N/A	CADAstral TRAVERSE	FOUND
SS 208769	696 650.089	6 080 031.196	C	N/A	CADAstral TRAVERSE	FOUND
SS 208770	696 551.842	6 080 035.870	C	N/A	CADAstral TRAVERSE	FOUND
SS 208772	696 487.914	6 080 081.575	C	N/A	CADAstral TRAVERSE	FOUND
SS 208802	696 993.929	6 079 958.377	C	N/A	CADAstral TRAVERSE	FOUND
SS 208803	696 972.449	6 079 872.808	C	N/A	CADAstral TRAVERSE	FOUND
SS 208805	696 902.969	6 079 897.822	C	N/A	CADAstral TRAVERSE	FOUND
SS 208806	696 823.324	6 079 908.844	C	N/A	CADAstral TRAVERSE	FOUND
SS 208807	696 812.844	6 079 808.049	C	N/A	CADAstral TRAVERSE	PLACED
SS 208808	696 878.869	6 079 775.265	C	N/A	CADAstral TRAVERSE	PLACED
SS 208809	696 958.355	6 079 753.714	C	N/A	CADAstral TRAVERSE	PLACED
SS 208875	696 936.742	6 079 682.709	C	N/A	CADAstral TRAVERSE	PLACED
SS 208876	696 769.889	6 079 729.385	C	N/A	CADAstral TRAVERSE	PLACED
PM 158562	696 955.014	6 079 242.43	D	N/A	AUSPOS	PLACED

DATE OF SCIMS COORDINATES: 07-04-2022 MGA ZONE 55 MGA DATUM: GDA2020  
COMBINED SCALE FACTOR 0.999973

(UU) BENEFITTED BY RIGHT OF ACCESS 20.115 METRE(S) WIDE AND VARIABLE (DP1140653)  
 (XX) BENEFITTED BY RIGHT OF ACCESS 10 WIDE AND VARIABLE (DP1001136)  
 (ZZ) BENEFITTED BY RIGHT OF ACCESS 20.115 WIDE (DP1207483)  
 (X) LAND EXCLUDES MINERALS (S.171 CROWN LANDS ACT 1989)  
 (Y) LAND EXCLUDES MINERALS AND IS SUBJECT TO RESERVATIONS AND CONDITIONS IN FAVOUR OF THE CROWN - SEE CROWN GRANTS(S)  
 (WWW) LAND EXCLUDES MINERALS - 9185535

RAIL CORPORATION NEW SOUTH WALES  
 APPROVAL: 22 JULY 2015  
 REFERENCE: QUEANBEYAN\_220715  
 EASEMENT FOR NOISE, VIBRATION & ELECTROLYSIS (TRAIN) WIDE DP 1269436 AFFECTING WHOLE OF LOTS 801-850

- (C) RIGHT OF ACCESS 20 WIDE & VARIABLE WIDTH
- (E) EASEMENT FOR WATER SUPPLY VARIABLE WIDTH WIDE DP 1269553
- (G) EASEMENT FOR WATER SUPPLY 8 WIDE & VARIABLE WIDTH
- (K) RIGHT OF ACCESS VARIABLE WIDTH WIDE DP 1269553
- (Q) EASEMENT FOR PADMOUNT SUB STATION 4.2 WIDE WIDE DP 1269436
- (R) EASEMENT FOR WATER SUPPLY VARIABLE WIDTH
- (T) RIGHT OF CARRIAGEWAY 20 WIDE & VARIABLE WIDTH WIDE DP 1052367
- (V) RIGHT OF CARRIAGEWAY 20 WIDE WIDE DP 1140653
- (W) POSITIVE COVENANT (TEMPORARY ASSET PROTECTION ZONE)
- (Z) PART OF RIGHT OF CARRIAGEWAY 20 WIDE & VARIABLE WIDTH WIDE DP 1052367 TO BE RELEASED

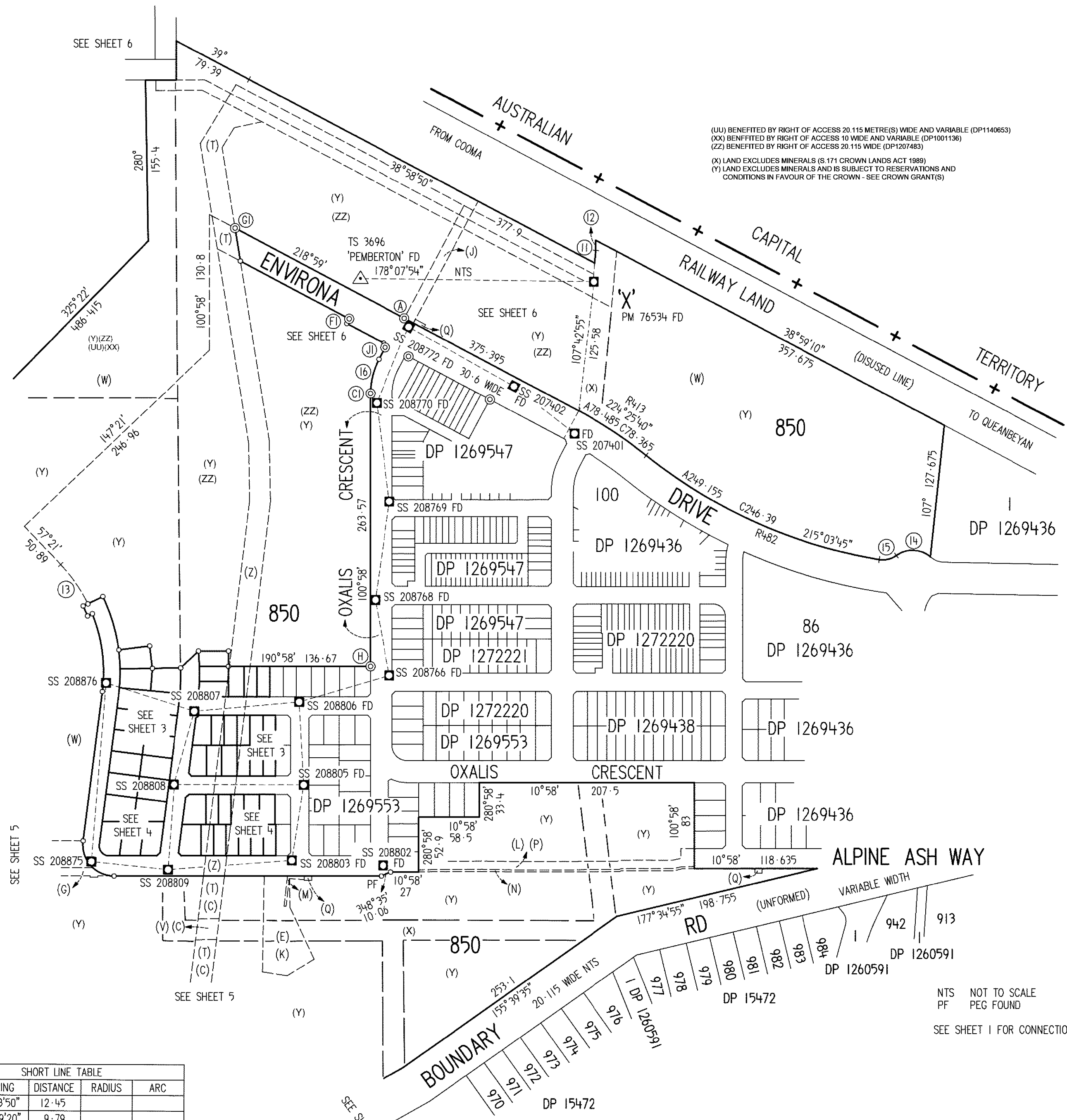
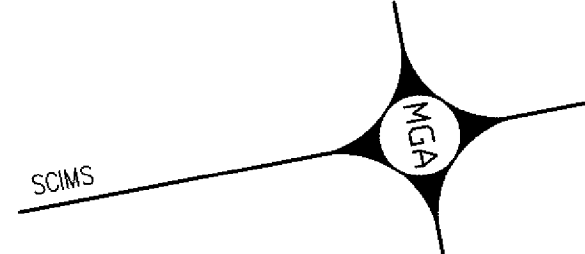
Surveyor: HANNAH JAYNE PEARCE  
 Date of Survey: 17 May 2022  
 Surveyor's Ref: 17181-19 20M (PARTIAL)

## PLAN OF SUBDIVISION OF LOT 554 DP 1269553

L.G.A.: QUEANBEYAN-PALERANG REGIONAL  
 Locality: TRALEE  
 Subdivision No: SC.2022.1011  
 Lengths are in metres. Reduction Ratio 1:7500

Registered  
 23/05/2022

# DP1270463



(UU) BENEFITED BY RIGHT OF ACCESS 20.115 METRE(S) WIDE AND VARIABLE (DP1140653)  
(XX) BENEFITED BY RIGHT OF ACCESS 10 WIDE AND VARIABLE (DP1001136)  
(ZZ) BENEFITED BY RIGHT OF ACCESS 20.115 WIDE (DP1207483)  
(X) LAND EXCLUDES MINERALS (S 171 CROWN LANDS ACT 1989)  
(Y) LAND EXCLUDES MINERALS AND IS SUBJECT TO RESERVATIONS AND CONDITIONS IN FAVOUR OF THE CROWN - SEE CROWN GRANT(S)

- (C) RIGHT OF ACCESS 20 WIDE & VARIABLE WIDTH
- (E) EASEMENT FOR WATER SUPPLY VARIABLE WIDTH VIDE DP 1269553
- (G) EASEMENT FOR WATER SUPPLY 8 WIDE & VARIABLE WIDTH
- (J) EASEMENT FOR FUTURE INFRASTRUCTURE 10 WIDE & VARIABLE WIDTH VIDE DP 1269436
- (K) RIGHT OF ACCESS VARIABLE WIDTH VIDE DP 1269553
- (L) EASEMENT FOR WATER SUPPLY 8 WIDE & VARIABLE WIDTH VIDE DP 1269553
- (M) EASEMENT FOR UNDERGROUND POWERLINES 2 WIDE VIDE DP 1269553
- (N) EASEMENT FOR UNDERGROUND POWERLINES 2 WIDE VIDE DP 1269553
- (P) RIGHT OF ACCESS 8 WIDE & VARIABLE WIDTH VIDE DP 1269553
- (Q) EASEMENT FOR PADMOUNT SUBSTATION 4-2 WIDE VIDE DP 1269436
- (T) RIGHT OF CARRIAGEWAY 20 WIDE & VARIABLE WIDTH VIDE DP 1052367
- (V) RIGHT OF CARRIAGEWAY 20 WIDE VIDE DP 1140653
- (W) POSITIVE COVENANT (TEMPORARY ASSET PROTECTION ZONE)
- (Z) PART OF RIGHT OF CARRIAGEWAY 20 WIDE & VARIABLE WIDTH VIDE DP 1052367 TO BE RELEASED

TABLE OF REFERENCE MARKS					
CORNER	FROM	BEARING	DISTANCE	ORIGIN	STATE
A	RM GIP	52°51'10"	5.365	DP 1269436	FOUND
B	RM GIP	355°57'50"	19.905		PLACED
C	RM SS 208876	30°41'30"	13.78		PLACED
D	RM DHW	331°13'40"	16.435		PLACED
	RM DHW	311°29'20"	9.15		PLACED
E	RM SS 208807	87°53'30"	6.845		PLACED
F	RM DHW	322°27'30"	18.55		PLACED
	RM DHW	314°47'	8.02		PLACED
G	RM SS 208806	69°54'50"	18.185	DP 1269553	FOUND
H	RM DHW	176°20'	5.025	DP 1269553	FOUND
	RM DHW	195°29'	16.39	DP 1269553	FOUND
J	RM SS 208766	308°30'40"	5.84	DP 1269547	FOUND
K	RM DHW	244°32'	5.87	DP 1269553	FOUND
	RM DHW	261°50'	13.58	DP 1269553	FOUND
L	RM DHW	198°26'	13.08		PLACED
	RM DHW	166°51'	5.73		PLACED
M	RM SS 208808	43°50'50"	17.49		PLACED
N	RM SS 208809	241°07'20"	17.25		PLACED
P	RM DHW	74°12'	15.7		PLACED
	RM DHW	47°12'	9.845		PLACED
Q	RM DHW	28°21'	13.815		PLACED
	RM DHW	50°38'	6.44		PLACED
R	RM SS 208875	306°13'10"	17.96		PLACED
S	RM DHW	88°13'30"	5.975		PLACED
	RM DHW	95°12'30"	14.09		PLACED
T	RM DHW	123°39'	15.14	DP 1269553	FOUND
U	RM SS 208803	237°22'	6.105	DP 1269553	FOUND
V	RM SS 208805	13°07'	5.055	DP 1269553	FOUND
W	RM DHW	135°41'	5.825	DP 1269553	FOUND
	RM DHW	116°18'	13.36	DP 1269553	FOUND
Z	RM GIP	58°01'30"	26.82		PLACED
AI	RM GIP	334°38'40"	29.885	DP 1269436	FOUND
BI	RM GIP	140°38'50"	10.405	DP 1269436	FOUND
CI	RM SS 208770	248°40'40"	8.39	DP 1269547	FOUND
DI	RM SS 208772	101°07'05"	28.515	DP 1269547	FOUND
EI	RM SS 207402	165°11'	28.28	DP 1269547	FOUND
FI	RM GIP	38°27'40"	3		PLACED
GI	RM GIP	37°31'30"	3.11		PLACED
HI	RM GIP	28°25'	20.755	DP 1269436	FOUND
J1	RM DHW	152°53'	9.255		PLACED
	RM DHW	218°42'50"	16.34		PLACED
K1	RM GIP	235°06'	0.81		PLACED

SHORT LINE TABLE				
LINE	BEARING	DISTANCE	RADIUS	ARC
11	286°13'50"	12.45		
12	280°59'20"	9.79		
13	66°10'30"	45.965	149.8	46.145
14	193°10'10"	32.655	26.3	35.235
15	177°31'20"	17	22	17.455
16	114°58'30"	34.18	70.6	34.52

Surveyor: HANNAH JAYNE PEARCE  
Date of Survey: 17 May 2022  
Surveyor's Ref: 17181-19 20M (PARTIAL)

### PLAN OF SUBDIVISION OF LOT 554 DP 1269553

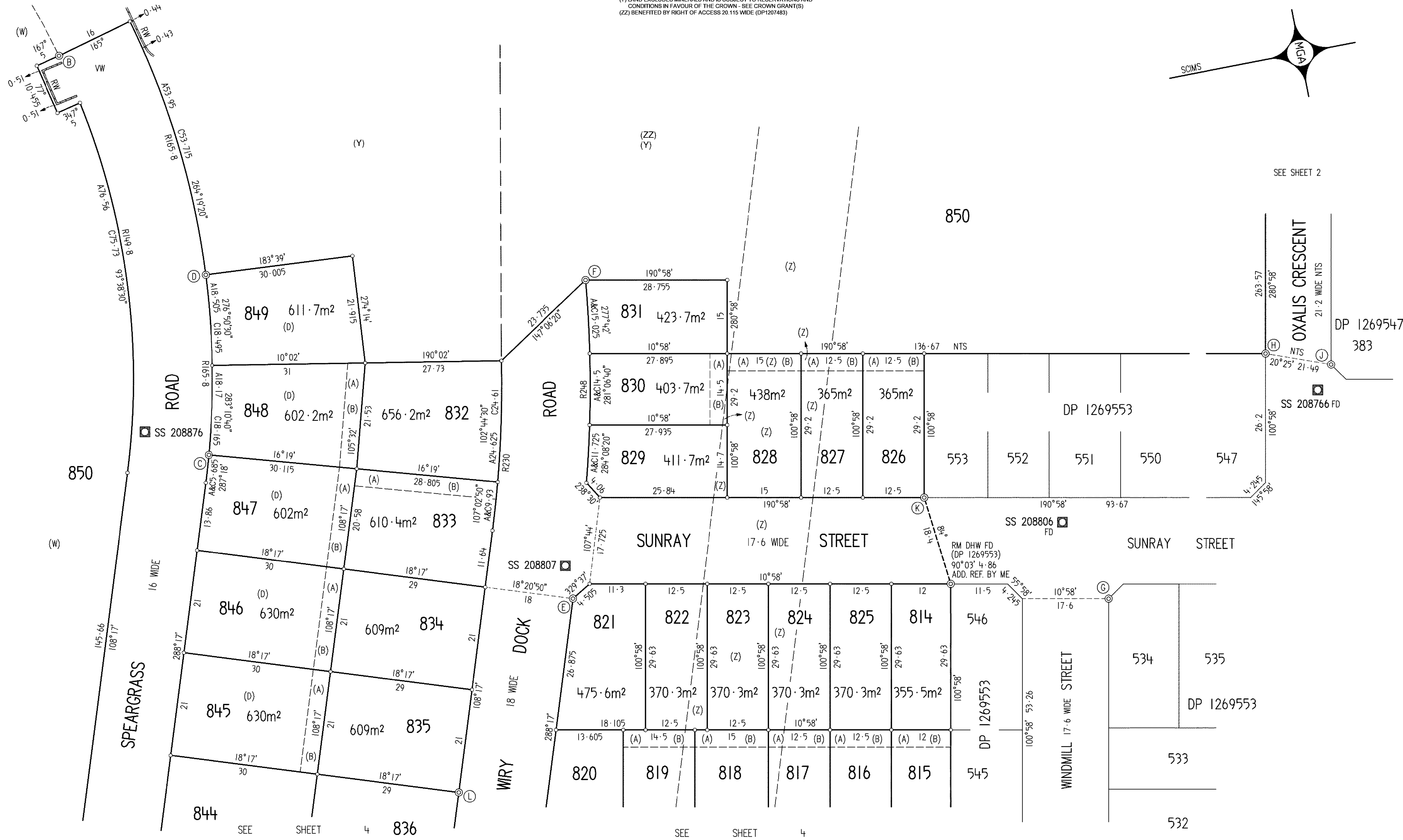
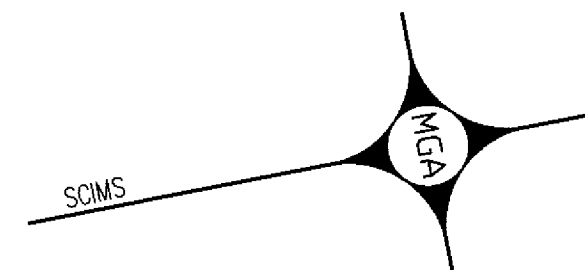
L.G.A.: QUEANBEYAN-PALERANG REGIONAL  
Locality: TRALEE  
Subdivision No: sc.2022.1011

Registered  
23/05/2022

# DP1270463

Lengths are in metres. Reduction Ratio: 1:3000

(Y) LAND EXCLUDES MINERALS AND IS SUBJECT TO RESERVATIONS AND CONDITIONS IN FAVOUR OF THE CROWN - SEE CROWN GRANT(S)  
(ZZ) BENEFITTED BY RIGHT OF ACCESS 20.115 WIDE (DP1207483)



SEE SHEET 2

SEE SHEET 1 FOR CONNECTIONS BETWEEN PERMANENT MARKS  
SEE SHEET 2 FOR REFERENCE MARK INFORMATION

RW ROUGH STONE RETAINING WALL 0.3 WIDE  
VW VARIABLE WIDTH

- (A) EASEMENT FOR DRAINAGE OF SEWAGE 3.5 WIDE
- (B) EASEMENT FOR DRAINAGE OF WATER 3.5 WIDE
- (D) POSITIVE COVENANT (BUSHFIRE)
- (W) POSITIVE COVENANT (TEMPORARY ASSET PROTECTION ZONE)
- (Z) PART OF RIGHT OF CARRIAGEWAY 20 WIDE & VARIABLE WIDTH VIDE DP 1052367 TO BE RELEASED

Surveyor: HANNAH JAYNE PEARCE  
Date of Survey: 17 May 2022  
Surveyor's Ref: 17181-19 20M (PARTIAL)

### PLAN OF SUBDIVISION OF LOT 554 DP 1269553

L.G.A.: QUEANBEYAN-PALERANG REGIONAL  
Locality: TRALEE  
Subdivision No: SC.2022.1011

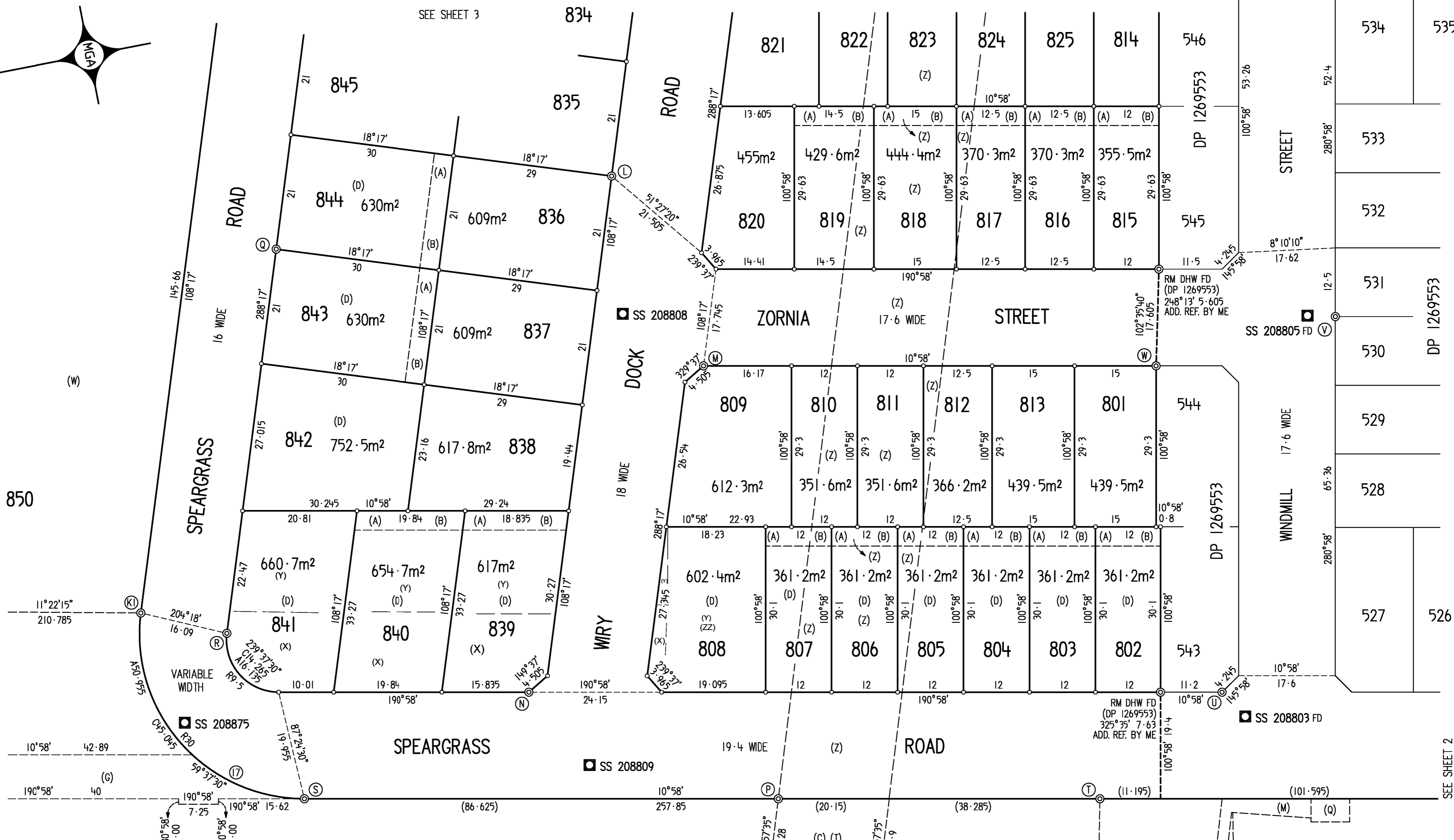
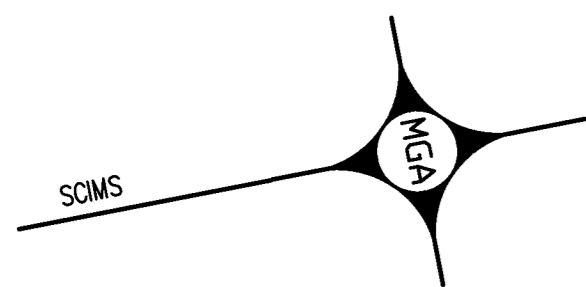
Registered  
23/05/2022

# DP1270463

Lengths are in metres. Reduction Ratio 1:500

(ZZ) BENEFITED BY RIGHT OF ACCESS 20.115 WIDE (DP1207483)  
(X) LAND EXCLUDES MINERALS (S.171 CROWN LANDS ACT 1989)  
(Y) LAND EXCLUDES MINERALS AND IS SUBJECT TO RESERVATIONS AND CONDITIONS IN FAVOUR OF THE CROWN - SEE CROWN GRANT(S)

SEE SHEET 3



SHORT LINE TABLE				
LINE	BEARING	DISTANCE	RADIUS	ARC
17	(212°23')	(21.91)	(30)	(22.43)

SEE SHEET 1 FOR CONNECTIONS BETWEEN PERMANENT MARKS  
SEE SHEET 2 FOR REFERENCE MARK INFORMATION

- (A) EASEMENT FOR DRAINAGE OF SEWAGE 3.5 WIDE
- (B) EASEMENT FOR DRAINAGE OF WATER 3.5 WIDE
- (C) RIGHT OF ACCESS 20 WIDE & VARIABLE WIDTH
- (D) POSITIVE COVENANT (BUSHFIRE)
- (E) EASEMENT FOR WATER SUPPLY VARIABLE WIDTH VIDE DP 1269553
- (G) EASEMENT FOR WATER SUPPLY 8 WIDE & VARIABLE WIDTH
- (K) RIGHT OF ACCESS VARIABLE WIDTH VIDE DP 1269553
- (M) EASEMENT FOR UNDERGROUND POWERLINES 2 WIDE VIDE DP 1269553
- (Q) EASEMENT FOR PADMOUNT SUB STATION 4.2 WIDE VIDE DP 1269436
- (T) RIGHT OF CARRIAGEWAY 20 WIDE & VARIABLE WIDTH VIDE DP 1052367
- (W) POSITIVE COVENANT (TEMPORARY ASSET PROTECTION ZONE)
- (Z) PART OF RIGHT OF CARRIAGEWAY 20 WIDE & VARIABLE WIDTH VIDE DP 1052367 TO BE RELEASED

Surveyor: HANNAH JAYNE PEARCE  
Date of Survey: 17 May 2022  
Surveyor's Ref: 17181-19 20M (PARTIAL)

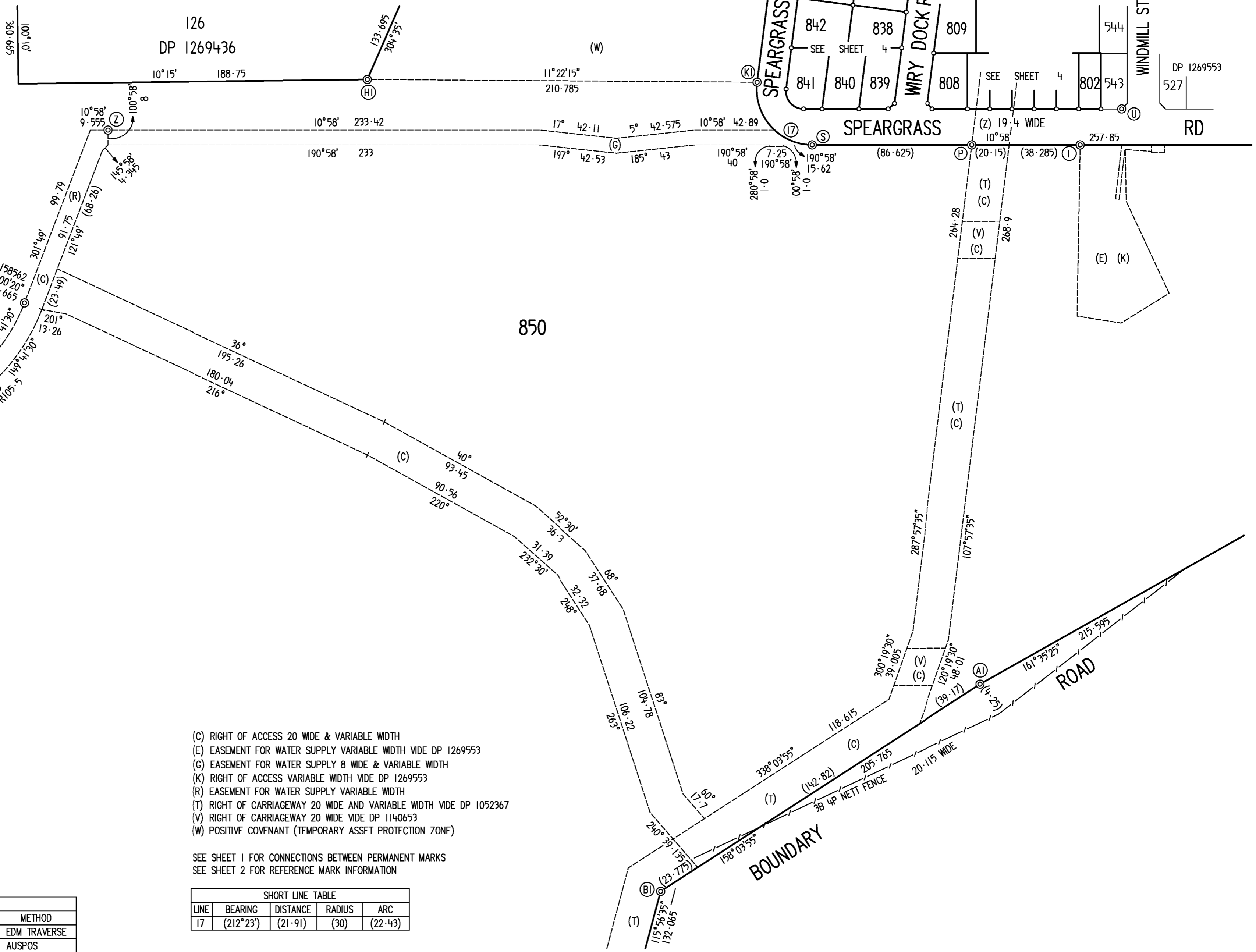
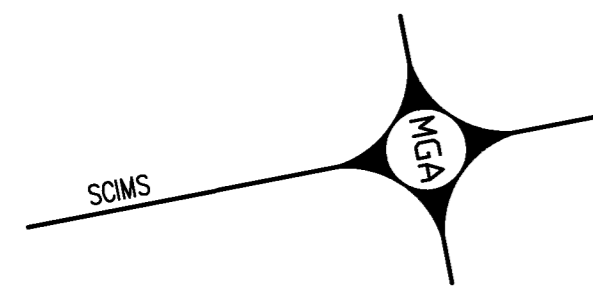
### PLAN OF SUBDIVISION OF LOT 554 DP 1269553

L.G.A.: QUEANBEYAN-PALERANG REGIONAL  
Locality: TRALEE  
Subdivision No.: SC.2022.1011

Registered  
23/05/2022

## DP1270463

Lengths are in metres. Reduction Ratio 1:500



PM 158562

850

- (C) RIGHT OF ACCESS 20 WIDE & VARIABLE WIDTH
- (E) EASEMENT FOR WATER SUPPLY VARIABLE WIDTH VIDE DP 1269553
- (G) EASEMENT FOR WATER SUPPLY 8 WIDE & VARIABLE WIDTH
- (K) RIGHT OF ACCESS VARIABLE WIDTH VIDE DP 1269553
- (R) EASEMENT FOR WATER SUPPLY VARIABLE WIDTH
- (T) RIGHT OF CARRIAGEWAY 20 WIDE AND VARIABLE WIDTH VIDE DP 1052367
- (V) RIGHT OF CARRIAGEWAY 20 WIDE VIDE DP 1140653
- (W) POSITIVE COVENANT (TEMPORARY ASSET PROTECTION ZONE)

SEE SHEET 1 FOR CONNECTIONS BETWEEN PERMANENT MARKS  
SEE SHEET 2 FOR REFERENCE MARK INFORMATION

GNSS VALIDATION SCHEDULE				
FROM	TO	GRID BEARING	DISTANCE	METHOD
PM 76534	SS 208805	130°55'30"	560.985	EDM TRAVERSE
		130°55'33"	560.985	AUSPOS
SS 208805	GIP "1"	161°05'31"	841.995	EDM TRAVERSE
		161°05'29"	841.995	AUSPOS
GIP "1"	PM 158562	302°35'20"	262.075	EDM TRAVERSE
		302°35'24"	262.07	AUSPOS

SHORT LINE TABLE				
LINE	BEARING	DISTANCE	RADIUS	ARC
17	(212°23')	(21.91)	(30)	(22.43)

Surveyor: HANNAH JAYNE PEARCE  
Date of Survey: 17 May 2022  
Surveyor's Ref: 17181-19 (20M PARTIAL)

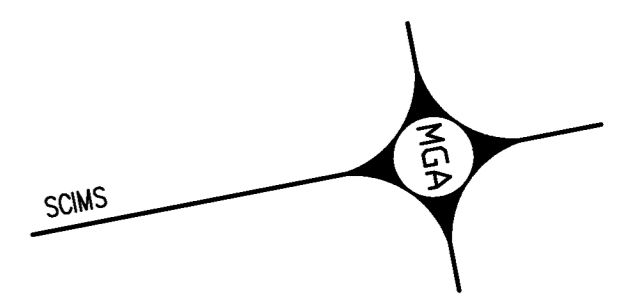
PLAN OF SUBDIVISION OF  
LOT 554 DP 1269553

L.G.A.: QUEANBEYAN-PALERANG REGIONAL  
Locality: TRALEE  
Subdivision No: SC.2022.1011

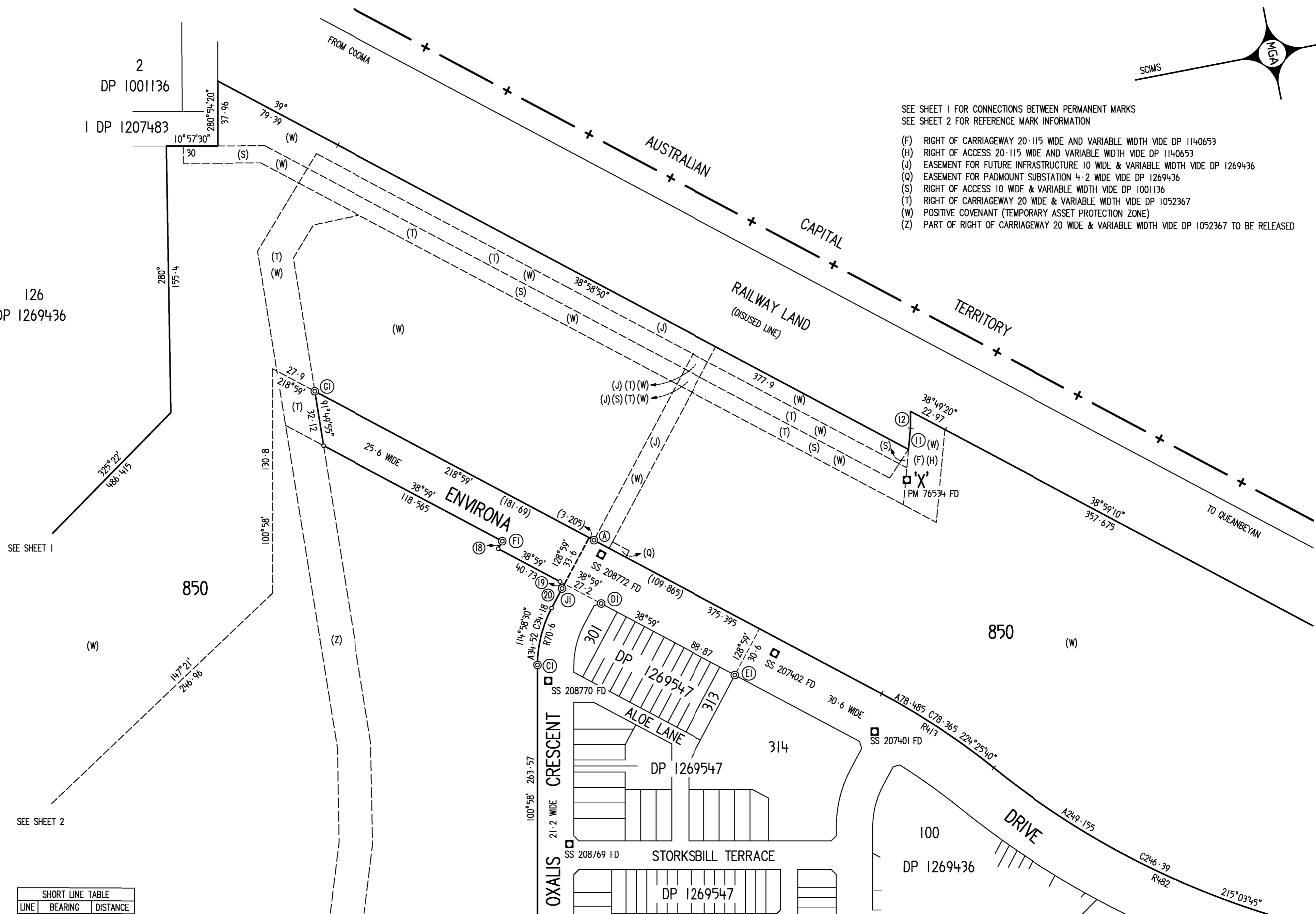
Registered  
23/05/2022

DP1270463

Lengths are in metres. Reduction Ratio 1:1500



- SEE SHEET 1 FOR CONNECTIONS BETWEEN PERMANENT MARKS  
SEE SHEET 2 FOR REFERENCE MARK INFORMATION
- (F) RIGHT OF CARRIAGEWAY 20.115 WIDE AND VARIABLE WIDTH VIDE DP 1140653
  - (H) RIGHT OF ACCESS 20.115 WIDE AND VARIABLE WIDTH VIDE DP 1140653
  - (J) EASEMENT FOR FUTURE INFRASTRUCTURE 10 WIDE & VARIABLE WIDTH VIDE DP 1269436
  - (Q) EASEMENT FOR PADMOUNT SUBSTATION 4.2 WIDE VIDE DP 1269436
  - (S) RIGHT OF ACCESS 10 WIDE & VARIABLE WIDTH VIDE DP 1001136
  - (T) RIGHT OF CARRIAGEWAY 20 WIDE & VARIABLE WIDTH VIDE DP 1052367
  - (W) POSITIVE COVENANT (TEMPORARY ASSET PROTECTION ZONE)
  - (Z) PART OF RIGHT OF CARRIAGEWAY 20 WIDE & VARIABLE WIDTH VIDE DP 1052367 TO BE RELEASED



SHORT LINE TABLE		
LINE	BEARING	DISTANCE
11	286°13'50"	12.45
12	280°59'20"	9.79
18	128°59'	5
19	83°59'	4.245
20	128°59'	12.92

SEE SHEET 2

Surveyor: HANNAH JAYNE PEARCE Date of Survey: 17 May 2022 Surveyor's Ref: 17181-19 20M (PARTIAL)	<b>PLAN OF SUBDIVISION OF LOT 554 DP 1269553</b>	L.G.A.: QUEANBEYAN-PALERANG REGIONAL Locality: TRALEE Subdivision No: SC.2022.1011 Lengths are in metres. Reduction Ratio: 1:1500	Registered 23/05/2022 <b>DP1270463</b>
--	--	--	--