

NOTES:

1. THIS PLAN ONLY INDICATES AREA OF FILL OF WHICH THE DEVELOPER AND ITS AGENTS ARE AWARE. IT HAS NOT BEEN CHECKED BY THE DEVELOPER, AND THE DEVELOPER DOES NOT GUARANTEE ITS ACCURACY. IN NO WAY SHOULD THIS PLAN BE READ AS A CONCLUSIVE STATEMENT OF THE FULL EXTENT OF THE FILL THAT MAY BE FOUND ON THE WHOLE LAND DEPICTED. LESSEES AND PURCHASERS SHOULD MAKE THEIR OWN INQUIRIES IN REGARD TO THE EXACT DRAINAGE, GEOTECHNICAL AND FILL CONDITIONS AFFECTING THEIR BLOCKS.
2. STREET TREES, STREET LIGHTS AND SUBSTATION LOCATIONS ARE INDICATIVE ONLY.
3. LANDSCAPING WITHIN THE INNER PROTECTION AREA MUST COMPLY WITH CLAUSE 3.7 OF THE NSW RURAL FIRE SERVICE PLANNING FOR BUSHFIRE PROTECTION (2018).

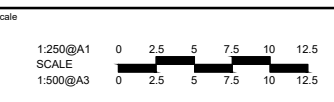
LEGEND

- STAGE 1B2 BOUNDARY
- FINISHED SURFACE CONTOURS (1m)
- FILL
- FILL DEPTH (to nearest 100mm)
- STREETLIGHT
- STREET TREE
- DRIVEWAY LOCATION
- SUBSTATION (ELECTRICAL)
- BLOCK AREA / BOUNDARY LENGTH
- 3.5m COMBINED EASEMENT (Sewer and Stormwater)
- PATH (1.2 - 2.5m wide)
- BUSHFIRE ATTACK LEVEL
- INNER PROTECTION AREA AFFECTED BLOCK (refer note 3)
- ONE WAY TRAFFIC DIRECTION
- TACTILE AND AUDIBLE SURFACE TREATMENT



file name: 306356CS026.dwg
 layout name: CS026
 plotted by: Danielle Fotigki
 file location: G:\306356\CAD\Superlots_Sales Plans plot_date: 12/07/2021 1:48 PM Sheet 4 of 28 Sheets
 plot location: G:\306356\CAD\Superlots_Sales Plans plot_date: 12/07/2021 1:48 PM Sheet 4 of 28 Sheets

Rev	Amendments	Approved	Date
B	FILL ON BLOCK UPDATED FOR REVISED 1B GRADING	BC	21-09-20
A	FIRST ISSUE	BC	30-07-20



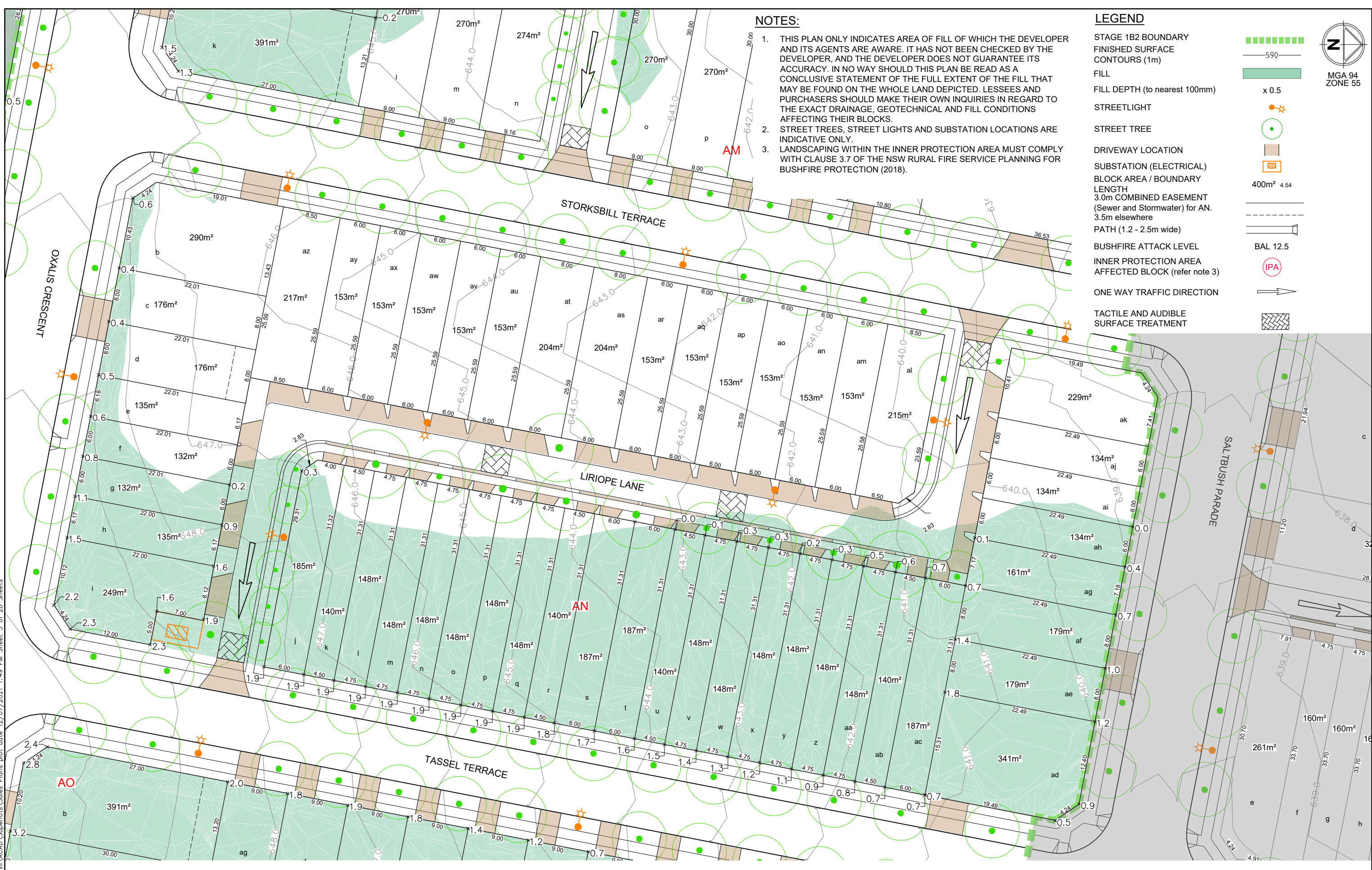
© Spiire Australia Pty Ltd All Rights Reserved
 This document is produced by Spiire Australia Pty Ltd solely for the benefit of and use by the client in accordance with the terms of the retainer. Spiire Australia Pty Ltd does not and shall not assume any responsibility or liability whatsoever to any third party arising out of any use or reliance by third party on the content of this document.

Lvl 1, 243 Northbourne Ave Lyneham
 Australian Capital Territory Australia T 61 2 6102 1000
 spiire.com.au ABN 55 050 029 635

Designed	Checked
Authorised	Date

SOUTH JERRABOMBERRA SALES PLAN
 STAGE 1B2
 SHEET 26 - SECTION A0
 QPRC
 VILLAGE BUILDING COMPANY

Drg No: **306356CS026** Rev: **B**



NOTES:

1. THIS PLAN ONLY INDICATES AREA OF FILL OF WHICH THE DEVELOPER AND ITS AGENTS ARE AWARE. IT HAS NOT BEEN CHECKED BY THE DEVELOPER, AND THE DEVELOPER DOES NOT GUARANTEE ITS ACCURACY. IN NO WAY SHOULD THIS PLAN BE READ AS A CONCLUSIVE STATEMENT OF THE FULL EXTENT OF THE FILL THAT MAY BE FOUND ON THE WHOLE LAND DEPICTED. LESSEES AND PURCHASERS SHOULD MAKE THEIR OWN INQUIRIES IN REGARD TO THE EXACT DRAINAGE, GEOTECHNICAL AND FILL CONDITIONS AFFECTING THEIR BLOCKS.
2. STREET TREES, STREET LIGHTS AND SUBSTATION LOCATIONS ARE INDICATIVE ONLY.
3. LANDSCAPING WITHIN THE INNER PROTECTION AREA MUST COMPLY WITH CLAUSE 3.7 OF THE NSW RURAL FIRE SERVICE PLANNING FOR BUSHFIRE PROTECTION (2018).

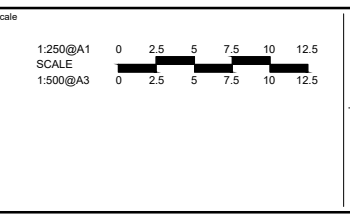
LEGEND

- STAGE 1B2 BOUNDARY: [Green dashed line]
- FINISHED SURFACE CONTOURS (1m): [Green line with '590']
- FILL: [Green shaded area]
- FILL DEPTH (to nearest 100mm): [Green area with 'x 0.5']
- STREETLIGHT: [Orange star symbol]
- STREET TREE: [Green circle with star]
- DRIVEWAY LOCATION: [Brown rectangle]
- SUBSTATION (ELECTRICAL): [Square with 'S']
- BLOCK AREA / BOUNDARY LENGTH: [Line with '400m² 4.54']
- 3.0m COMBINED EASEMENT (Sewer and Stormwater) for AN, 3.5m elsewhere: [Dashed line]
- PATH (1.2 - 2.5m wide): [Line with '1.2']
- BUSHFIRE ATTACK LEVEL: [Green area with 'BAL 12.5']
- INNER PROTECTION AREA AFFECTED BLOCK (refer note 3): [Red circle with 'IPA']
- ONE WAY TRAFFIC DIRECTION: [Arrow]
- TACTILE AND AUDIBLE SURFACE TREATMENT: [Hatched area]



file name: 306356CS027.dwg
 layout name: CS027
 plotted by: Danielle Fotigki
 file location: G:\306356\CAD\Superlots Sales Plans
 plot date: 12/07/2021 1:49 PM
 Sheet 5 of 28 Sheets

Rev	Amendments	Approved	Date
D	DRIVEWAYS UPDATED	BC	12-07-21
C	CONTOUR LABELS UPDATED	BC	15-03-21
B	FILL ON BLOCK UPDATED FOR REVISED 1B GRADING	BC	21-09-20
A	FIRST ISSUE	BC	30-07-20



© Spiire Australia Pty Ltd All Rights Reserved
 This document is produced by Spiire Australia Pty Ltd solely for the benefit of and use by the client in accordance with the terms of the retainer. Spiire Australia Pty Ltd does not and shall not assume any responsibility or liability whatsoever to any third party arising out of any use or reliance by third party on the content of this document.

Lvl 1, 243 Northbourne Ave Lyneham
 Australian Capital Territory Australia T 61 2 6102 1000
 spiire.com.au ABN 55 050 029 635

Designed: [] Checked: []
 Authorised: [] Date: []

SOUTH JERRABOMBERRA SALES PLAN
 STAGE 1B2
 SHEET 27 - SECTION AN
 QPRC
 VILLAGE BUILDING COMPANY

Drg No: **306356CS027** Rev: **D**

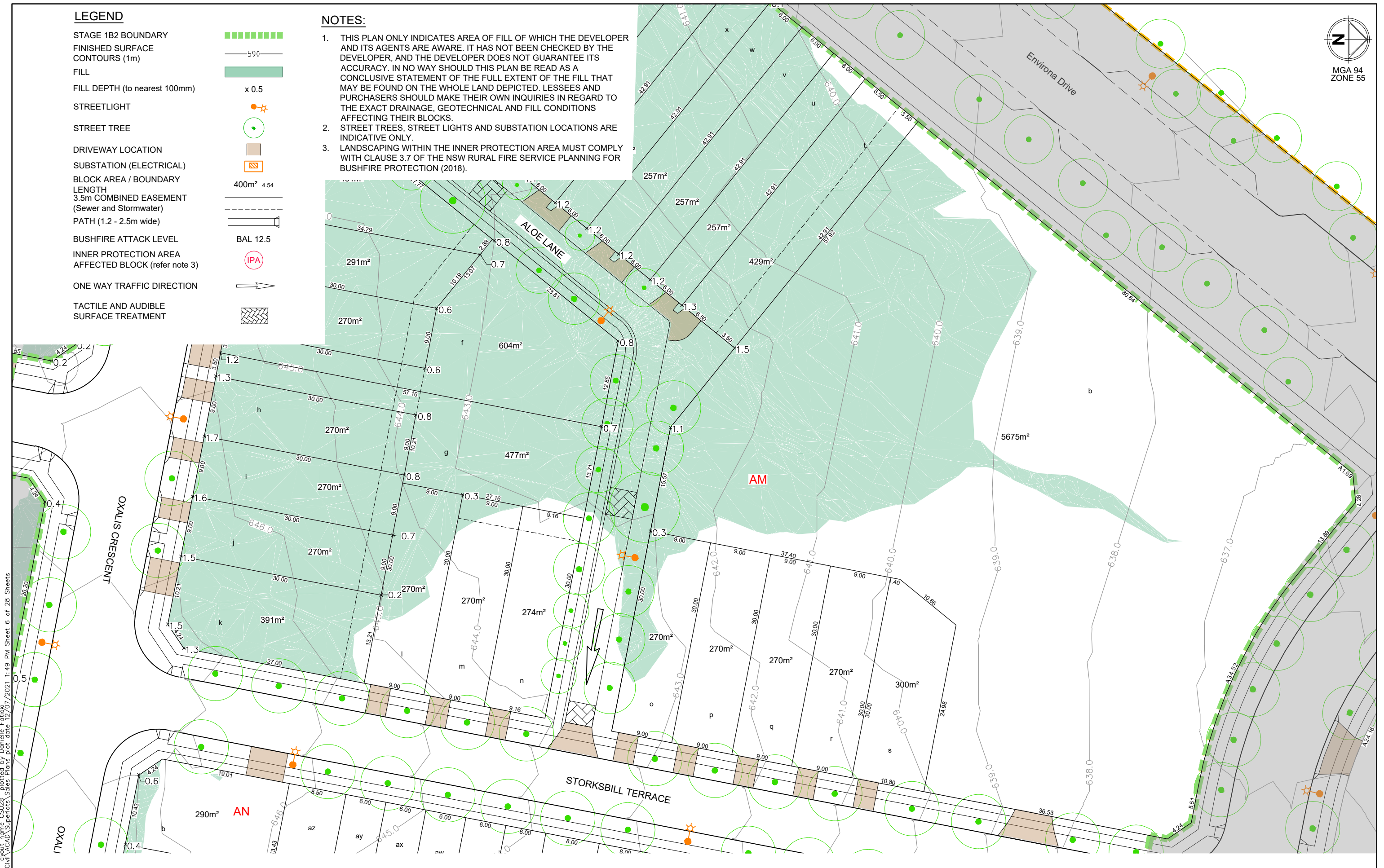


LEGEND

- STAGE 1B2 BOUNDARY
- FINISHED SURFACE
- CONTOURS (1m)
- FILL
- FILL DEPTH (to nearest 100mm) x 0.5
- STREETLIGHT
- STREET TREE
- DRIVEWAY LOCATION
- SUBSTATION (ELECTRICAL)
- BLOCK AREA / BOUNDARY LENGTH 400m² 4.54
- 3.5m COMBINED EASEMENT (Sewer and Stormwater)
- PATH (1.2 - 2.5m wide)
- BUSHFIRE ATTACK LEVEL BAL 12.5
- INNER PROTECTION AREA IPA
- AFFECTED BLOCK (refer note 3)
- ONE WAY TRAFFIC DIRECTION
- TACTILE AND AUDIBLE SURFACE TREATMENT

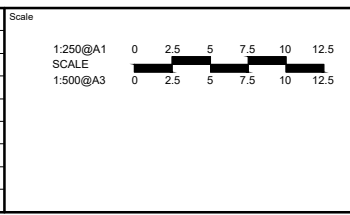
NOTES:

1. THIS PLAN ONLY INDICATES AREA OF FILL OF WHICH THE DEVELOPER AND ITS AGENTS ARE AWARE. IT HAS NOT BEEN CHECKED BY THE DEVELOPER, AND THE DEVELOPER DOES NOT GUARANTEE ITS ACCURACY. IN NO WAY SHOULD THIS PLAN BE READ AS A CONCLUSIVE STATEMENT OF THE FULL EXTENT OF THE FILL THAT MAY BE FOUND ON THE WHOLE LAND DEPICTED. LESSEES AND PURCHASERS SHOULD MAKE THEIR OWN INQUIRIES IN REGARD TO THE EXACT DRAINAGE, GEOTECHNICAL AND FILL CONDITIONS AFFECTING THEIR BLOCKS.
2. STREET TREES, STREET LIGHTS AND SUBSTATION LOCATIONS ARE INDICATIVE ONLY.
3. LANDSCAPING WITHIN THE INNER PROTECTION AREA MUST COMPLY WITH CLAUSE 3.7 OF THE NSW RURAL FIRE SERVICE PLANNING FOR BUSHFIRE PROTECTION (2018).



file name: 306356CS023.dwg, layout name: CS028, plotted by: Danielle Fotigki, file location: G:\306356\306356\Civil\ACAD\Superlots_Sales_Plans, plot date: 12/07/2021 1:49 PM, Sheet 6 of 28, Sheets

Rev	Amendments	Approved	Date
D	DRIVEWAYS UPDATED	BC	12-07-21
C	FILL ON BLOCK LABEL UPDATED	BC	15-03-21
B	FILL ON BLOCK UPDATED FOR REVISED 1B GRADING	BC	21-09-20
A	FIRST ISSUE	BC	30-07-20



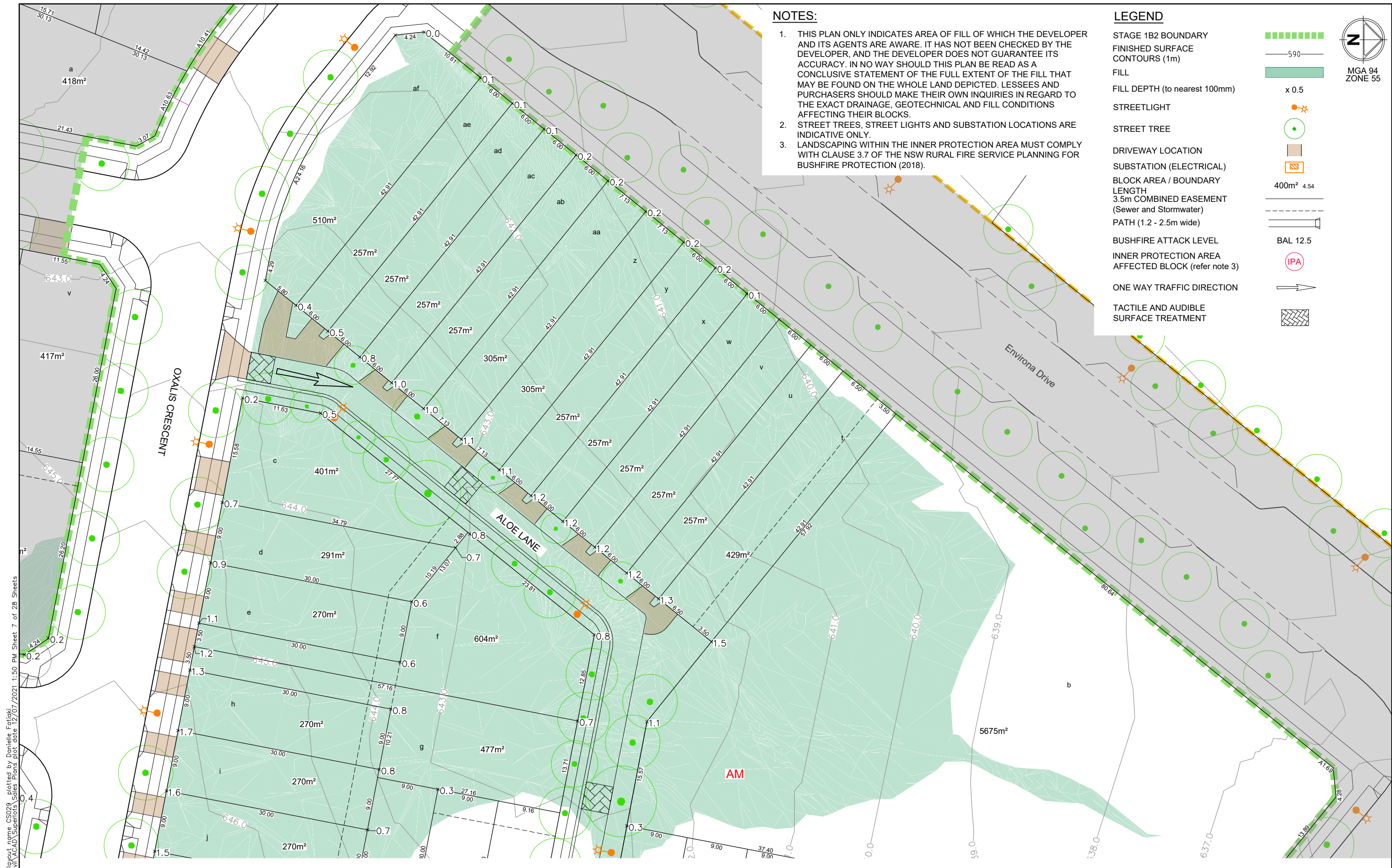
© Spiire Australia Pty Ltd All Rights Reserved
This document is produced by Spiire Australia Pty Ltd solely for the benefit of and use by the client in accordance with the terms of the retainer. Spiire Australia Pty Ltd does not and shall not assume any responsibility or liability whatsoever to any third party arising out of any use or reliance by third party on the content of this document.

Lvl 1, 243 Northbourne Ave Lyneham
Australian Capital Territory Australia T 61 2 6102 1000
spiire.com.au ABN 55 050 029 635

Designed	Checked
Authorised	Date

SOUTH JERRABOMBERRA SALES PLAN
STAGE 1B2
SHEET 28 - SECTION AM
 QPRC
 VILLAGE BUILDING COMPANY

Drg No **306356CS028** Rev **D**



NOTES:

1. THIS PLAN ONLY INDICATES AREA OF FILL OF WHICH THE DEVELOPER AND ITS AGENTS ARE AWARE. IT HAS NOT BEEN CHECKED BY THE DEVELOPER, AND THE DEVELOPER DOES NOT GUARANTEE ITS ACCURACY. IN NO WAY SHOULD THIS PLAN BE READ AS A CONCLUSIVE STATEMENT OF THE FULL EXTENT OF THE FILL THAT MAY BE FOUND ON THE WHOLE LAND DEPICTED. LESSEES AND PURCHASERS SHOULD MAKE THEIR OWN INQUIRIES IN REGARD TO THE EXACT DRAINAGE, GEOTECHNICAL AND FILL CONDITIONS AFFECTING THEIR BLOCKS.
2. STREET TREES, STREET LIGHTS AND SUBSTATION LOCATIONS ARE INDICATIVE ONLY.
3. LANDSCAPING WITHIN THE INNER PROTECTION AREA MUST COMPLY WITH CLAUSE 3.7 OF THE NSW RURAL FIRE SERVICE PLANNING FOR BUSHFIRE PROTECTION (2018).

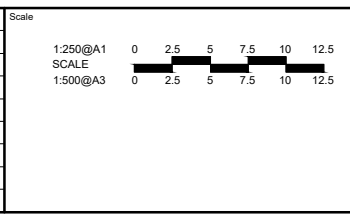
LEGEND

- STAGE 1B2 BOUNDARY:
- FINISHED SURFACE:
- CONTOURS (1m):
- FILL:
- FILL DEPTH (to nearest 100mm): x 0.5
- STREETLIGHT:
- STREET TREE:
- DRIVEWAY LOCATION:
- SUBSTATION (ELECTRICAL):
- BLOCK AREA / BOUNDARY LENGTH: 400m² 4.54
- 3.5m COMBINED EASEMENT (Sewer and Stormwater):
- PATH (1.2 - 2.5m wide):
- BUSHFIRE ATTACK LEVEL: BAL 12.5
- INNER PROTECTION AREA: IPA
- AFFECTED BLOCK (refer note 3):
- ONE WAY TRAFFIC DIRECTION:
- TACTILE AND AUDIBLE SURFACE TREATMENT:



file name: 306356CS029 - layout name: CS029 - plotted by: Danielle Fotigki
 file location: G:\306356\306356\Civil\ACAD\Superplans\Sales Plans\plot_date: 12/07/2021 1:50 PM Sheet 7 of 28 Sheets

Rev	Amendments	Approved	Date
C	DRIVEWAYS UPDATED	BC	12-07-21
B	FILL ON BLOCK UPDATED FOR REVISED 1B GRADING	BC	21-09-20
A	FIRST ISSUE	BC	30-07-20



© Spiire Australia Pty Ltd All Rights Reserved
 This document is produced by Spiire Australia Pty Ltd solely for the benefit of and use by the client in accordance with the terms of the retainer. Spiire Australia Pty Ltd does not and shall not assume any responsibility or liability whatsoever to any third party arising out of any use or reliance by third party on the content of this document.

Lvl 1, 243 Northbourne Ave Lyneham
 Australian Capital Territory Australia T 61 2 6102 1000
 spiire.com.au ABN 55 050 029 635

Designed	Checked
Authorised	Date

SOUTH JERRABOMBERRA SALES PLAN
 STAGE 1B2
 SHEET 29 - SECTION AM
 QPRC
 VILLAGE BUILDING COMPANY

Drp No: **306356CS029** Rev: **C**