

NOTES:

1. THIS PLAN ONLY INDICATES AREA OF FILL OF WHICH THE DEVELOPER AND ITS AGENTS ARE AWARE. IT HAS NOT BEEN CHECKED BY THE DEVELOPER, AND THE DEVELOPER DOES NOT GUARANTEE ITS ACCURACY. IN NO WAY SHOULD THIS PLAN BE READ AS A CONCLUSIVE STATEMENT OF THE FULL EXTENT OF THE FILL THAT MAY BE FOUND ON THE WHOLE LAND DEPICTED. LESSEES AND PURCHASERS SHOULD MAKE THEIR OWN INQUIRIES IN REGARD TO THE EXACT DRAINAGE, GEOTECHNICAL AND FILL CONDITIONS AFFECTING THEIR BLOCKS.
2. STREET TREES, STREET LIGHTS AND SUBSTATION LOCATIONS ARE INDICATIVE ONLY.
3. LANDSCAPING WITHIN THE INNER PROTECTION AREA MUST COMPLY WITH CLAUSE 3.7 OF THE NSW RURAL FIRE SERVICE PLANNING FOR BUSHFIRE PROTECTION (2018).

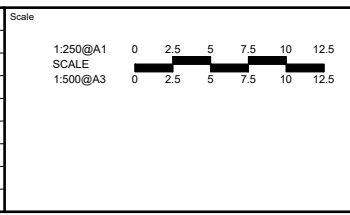
LEGEND

- STAGE 1A BOUNDARY: Yellow dashed line
- FINISHED SURFACE CONTOURS (1m): Grey line with '590' label
- FILL: Green shaded area
- FILL DEPTH (to nearest 100mm): 'x 0.5' label
- STREETLIGHT: Orange star symbol
- STREET TREE: Green circle with star
- DRIVEWAY LOCATION: Brown rectangle
- SUBSTATION (ELECTRICAL): Square with 'S' symbol
- BLOCK AREA / BOUNDARY LENGTH: Line with '400m² 4.54' label
- 3.5m COMBINED EASEMENT (Sewer and Stormwater): Dashed line
- PATH (1.2 - 2.5m wide): Dotted line
- BUSHFIRE ATTACK LEVEL: 'BAL 12.5' label
- INNER PROTECTION AREA AFFECTED BLOCK (refer note 3): Pink circle with 'IPA' label



file name: 306356CS044.dwg layout name: CS044 plotted by: Tom Willburger file location: G:\306356\Civil\ACAD\Superlots\Sales Plans plot date: 25/03/2021 6:12 PM Sheet 22 of 26 Sheets

Rev	Description	Approved	Date
A	FIRST ISSUE	BC	24-03-21
	Amendments		



© Spiire Australia Pty Ltd All Rights Reserved
This document is produced by Spiire Australia Pty Ltd solely for the benefit of and use by the client in accordance with the terms of the retainer. Spiire Australia Pty Ltd does not and shall not assume any responsibility or liability whatsoever to any third party arising out of any use or reliance by third party on the contents of this document.

Lvl 1, 243 Northbourne Ave Lyneham
Australian Capital Territory Australia T 61 2 6102 1000
spiire.com.au ABN 55 050 029 635

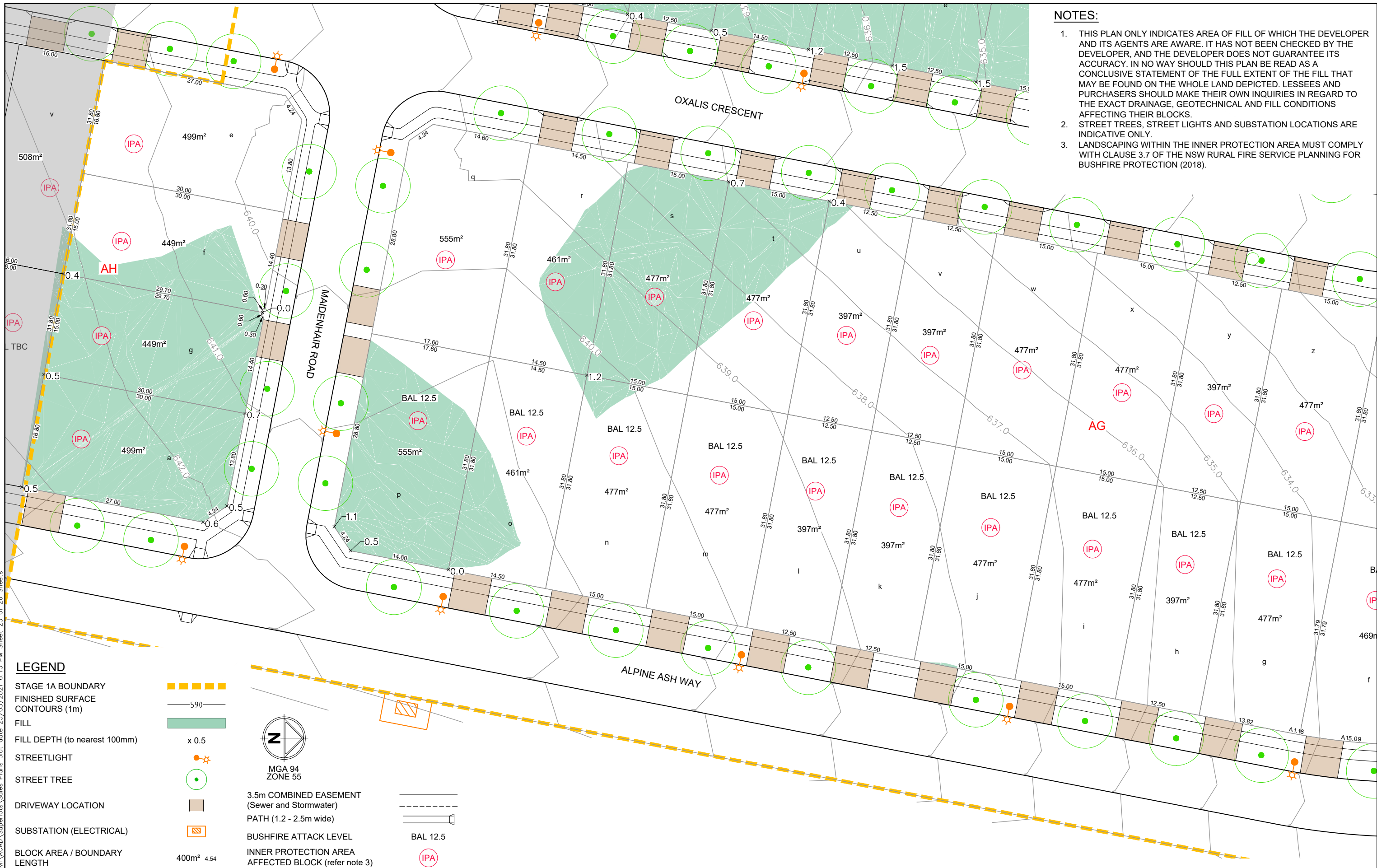
Designed: _____ Checked: _____
Authorised: _____ Date: _____

SOUTH JERRABOMBERRA SALES PLAN
STAGE 1A
SHEET 44 - SECTION AB & AG
QPRC
VILLAGE BUILDING COMPANY

Dwg No: **306356CS044** Rev: **A**

NOTES:

1. THIS PLAN ONLY INDICATES AREA OF FILL OF WHICH THE DEVELOPER AND ITS AGENTS ARE AWARE. IT HAS NOT BEEN CHECKED BY THE DEVELOPER, AND THE DEVELOPER DOES NOT GUARANTEE ITS ACCURACY. IN NO WAY SHOULD THIS PLAN BE READ AS A CONCLUSIVE STATEMENT OF THE FULL EXTENT OF THE FILL THAT MAY BE FOUND ON THE WHOLE LAND DEPICTED. LESSEES AND PURCHASERS SHOULD MAKE THEIR OWN INQUIRIES IN REGARD TO THE EXACT DRAINAGE, GEOTECHNICAL AND FILL CONDITIONS AFFECTING THEIR BLOCKS.
2. STREET TREES, STREET LIGHTS AND SUBSTATION LOCATIONS ARE INDICATIVE ONLY.
3. LANDSCAPING WITHIN THE INNER PROTECTION AREA MUST COMPLY WITH CLAUSE 3.7 OF THE NSW RURAL FIRE SERVICE PLANNING FOR BUSHFIRE PROTECTION (2018).



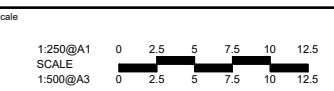
LEGEND

- STAGE 1A BOUNDARY
- FINISHED SURFACE CONTOURS (1m)
- FILL
- FILL DEPTH (to nearest 100mm)
- STREETLIGHT
- STREET TREE
- DRIVEWAY LOCATION
- SUBSTATION (ELECTRICAL)
- BLOCK AREA / BOUNDARY LENGTH



- 3.5m COMBINED EASEMENT (Sewer and Stormwater)
- PATH (1.2 - 2.5m wide)
- BUSHFIRE ATTACK LEVEL
- INNER PROTECTION AREA AFFECTED BLOCK (refer note 3)

Rev	Description	Approved	Date
A	FIRST ISSUE	BC	24-03-21



© Spiire Australia Pty Ltd All Rights Reserved
 This document is produced by Spiire Australia Pty Ltd solely for the benefit of and use by the client in accordance with the terms of the retainer. Spiire Australia Pty Ltd does not and shall not assume any responsibility or liability whatsoever to any third party arising out of any use or reliance by third party on the contents of this document.

Lvl 1, 243 Northbourne Ave Lyneham
 Australian Capital Territory Australia T 61 2 6102 1000
 spiire.com.au ABN 55 050 029 635

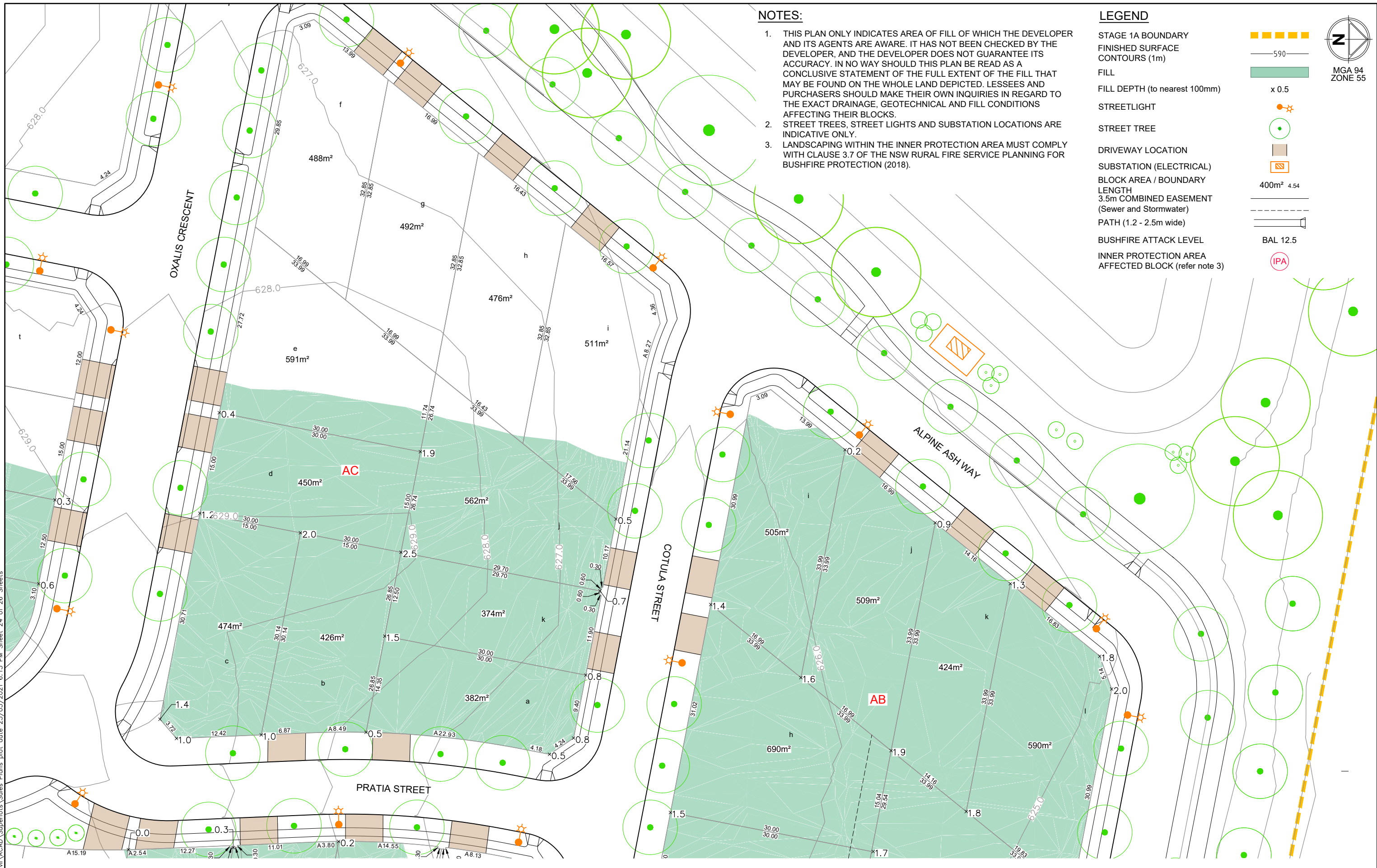
Designed _____ Checked _____
 Authorised _____ Date _____

SOUTH JERRABOMBERRA SALES PLAN
 STAGE 1A
 SHEET 45 - SECTION AG & AH
 QPRC
 VILLAGE BUILDING COMPANY

Dwg No **306356CS045** Rev **A**

file name: 306356CS045.dwg
 layout name: CS045
 plotted by: Tom Wilburger
 file location: G:\306356\306356\Civil\ACAD\Sales Plans\plot_date_25/03/2021_6:13 PM_Sheet_23 of 26_Sheets

file name: 306356CS046.dwg
 layout name: CS046
 plotted by: Tom Wilburger
 file location: G:\306356\CAD\Superlots Sales Plans\plot_date_25/03/2021_6:13 PM_Sheet_24_of_26_Sheets



NOTES:

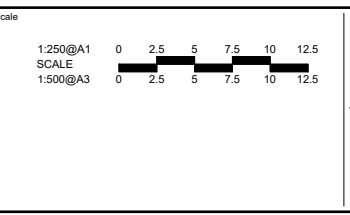
1. THIS PLAN ONLY INDICATES AREA OF FILL OF WHICH THE DEVELOPER AND ITS AGENTS ARE AWARE. IT HAS NOT BEEN CHECKED BY THE DEVELOPER, AND THE DEVELOPER DOES NOT GUARANTEE ITS ACCURACY. IN NO WAY SHOULD THIS PLAN BE READ AS A CONCLUSIVE STATEMENT OF THE FULL EXTENT OF THE FILL THAT MAY BE FOUND ON THE WHOLE LAND DEPICTED. LESSEES AND PURCHASERS SHOULD MAKE THEIR OWN INQUIRIES IN REGARD TO THE EXACT DRAINAGE, GEOTECHNICAL AND FILL CONDITIONS AFFECTING THEIR BLOCKS.
2. STREET TREES, STREET LIGHTS AND SUBSTATION LOCATIONS ARE INDICATIVE ONLY.
3. LANDSCAPING WITHIN THE INNER PROTECTION AREA MUST COMPLY WITH CLAUSE 3.7 OF THE NSW RURAL FIRE SERVICE PLANNING FOR BUSHFIRE PROTECTION (2018).

LEGEND

- STAGE 1A BOUNDARY: [Orange dashed line]
- FINISHED SURFACE CONTOURS (1m): [Grey line with '590']
- FILL: [Green shaded area]
- FILL DEPTH (to nearest 100mm): [Green shaded area with 'x 0.5']
- STREETLIGHT: [Orange star symbol]
- STREET TREE: [Green circle with star]
- DRIVEWAY LOCATION: [Brown rectangle]
- SUBSTATION (ELECTRICAL): [Orange square with 'S']
- BLOCK AREA / BOUNDARY LENGTH: [Grey line with '400m² 4.54']
- 3.5m COMBINED EASEMENT (Sewer and Stormwater): [Dashed line]
- PATH (1.2 - 2.5m wide): [Grey line with '1.2 - 2.5m']
- BUSHFIRE ATTACK LEVEL: [Grey line with 'BAL 12.5']
- INNER PROTECTION AREA AFFECTED BLOCK (refer note 3): [Red circle with 'IPA']



Rev	Description	Approved	Date
A	FIRST ISSUE	BC	24-03-21
	Amendments		



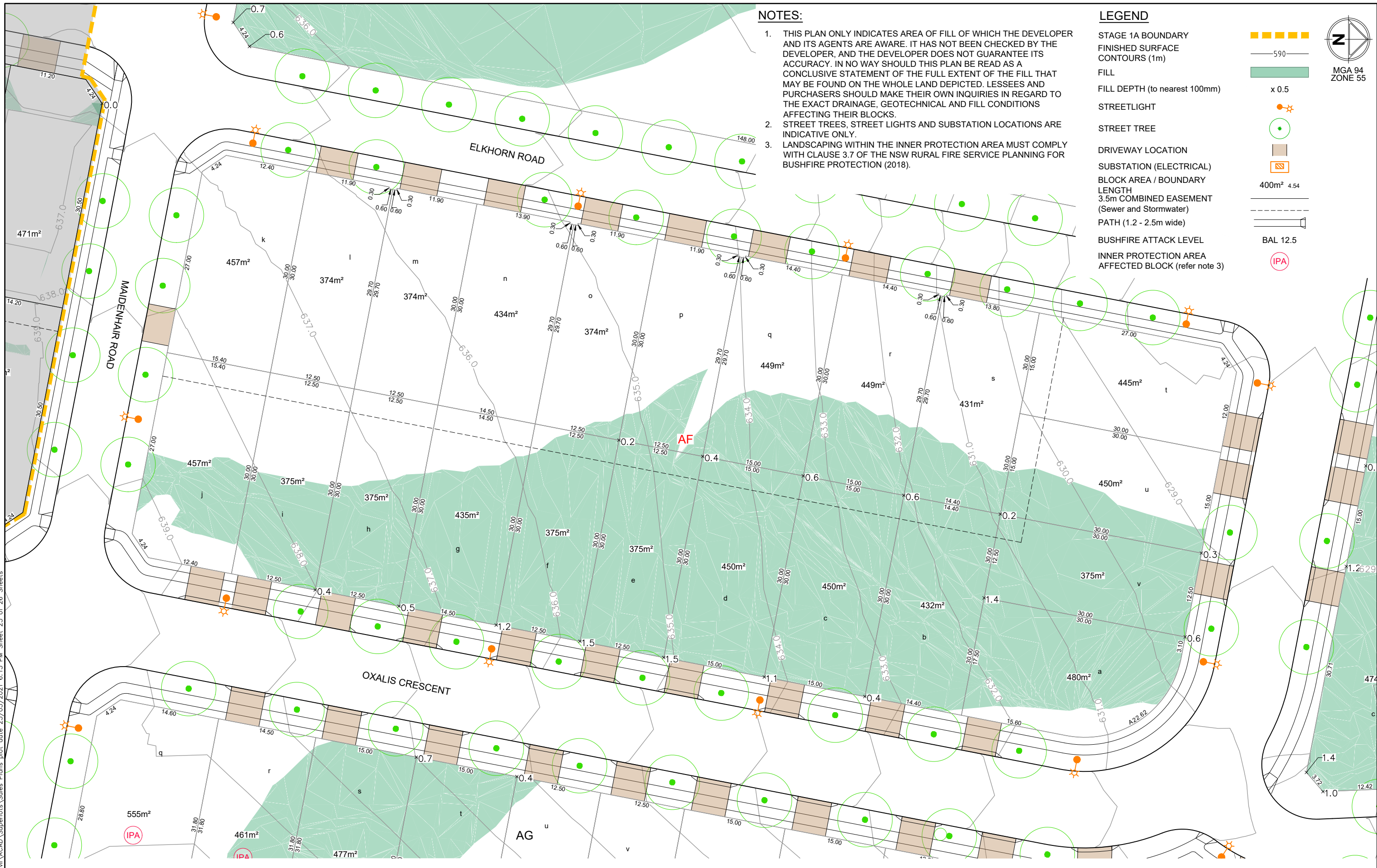
© Spiire Australia Pty Ltd All Rights Reserved
 This document is produced by Spiire Australia Pty Ltd solely for the benefit of and use by the client in accordance with the terms of the retainer. Spiire Australia Pty Ltd does not and shall not assume any responsibility or liability whatsoever to any third party arising out of any use or reliance by third party on the contents of this document.

spiire
 Lvl 1, 243 Northbourne Ave Lyneham
 Australian Capital Territory Australia T 61 2 6102 1000
 spiire.com.au ABN 55 050 029 635

Village
 Designed: [] Checked: []
 Authorised: [] Date: []

SOUTH JERRABOMBERRA SALES PLAN
 STAGE 1A
 SHEET 46 - SECTION AC & AG
 QPRC
 VILLAGE BUILDING COMPANY
 Drg No: 306356CS046 Rev: A

file name: 306356CS047.dwg
 layout name: CS047
 plotted by: Tom Willburger
 file location: G:\306356\306356\Civil\ACAD\Superlots\Sales Plans plot_date: 25/03/2021 6:13 PM Sheet: 25 of 26 Sheets



NOTES:

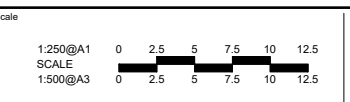
1. THIS PLAN ONLY INDICATES AREA OF FILL OF WHICH THE DEVELOPER AND ITS AGENTS ARE AWARE. IT HAS NOT BEEN CHECKED BY THE DEVELOPER, AND THE DEVELOPER DOES NOT GUARANTEE ITS ACCURACY. IN NO WAY SHOULD THIS PLAN BE READ AS A CONCLUSIVE STATEMENT OF THE FULL EXTENT OF THE FILL THAT MAY BE FOUND ON THE WHOLE LAND DEPICTED. LESSEES AND PURCHASERS SHOULD MAKE THEIR OWN INQUIRIES IN REGARD TO THE EXACT DRAINAGE, GEOTECHNICAL AND FILL CONDITIONS AFFECTING THEIR BLOCKS.
2. STREET TREES, STREET LIGHTS AND SUBSTATION LOCATIONS ARE INDICATIVE ONLY.
3. LANDSCAPING WITHIN THE INNER PROTECTION AREA MUST COMPLY WITH CLAUSE 3.7 OF THE NSW RURAL FIRE SERVICE PLANNING FOR BUSHFIRE PROTECTION (2018).

LEGEND

- STAGE 1A BOUNDARY: [Yellow dashed line]
- FINISHED SURFACE CONTOURS (1m): [Grey line with '590']
- FILL: [Green shaded area]
- FILL DEPTH (to nearest 100mm): [Green shaded area with 'x 0.5']
- STREETLIGHT: [Orange star symbol]
- STREET TREE: [Green circle with star]
- DRIVEWAY LOCATION: [Brown rectangle]
- SUBSTATION (ELECTRICAL): [Orange square with 'S']
- BLOCK AREA / BOUNDARY LENGTH: [Grey line with '400m² 4.54']
- 3.5m COMBINED EASEMENT (Sewer and Stormwater): [Dashed line]
- PATH (1.2 - 2.5m wide): [Grey line with 'x 0.5']
- BUSHFIRE ATTACK LEVEL: [Red circle with 'BAL 12.5']
- INNER PROTECTION AREA AFFECTED BLOCK (refer note 3): [Red circle with 'IPA']



Rev	Description	Approved	Date
A	FIRST ISSUE	BC	24-03-21
	Amendments		



© Spiire Australia Pty Ltd All Rights Reserved
 This document is produced by Spiire Australia Pty Ltd solely for the benefit of and use by the client in accordance with the terms of the retainer. Spiire Australia Pty Ltd does not and shall not assume any responsibility or liability whatsoever to any third party arising out of any use or reliance by third party on the contents of this document.



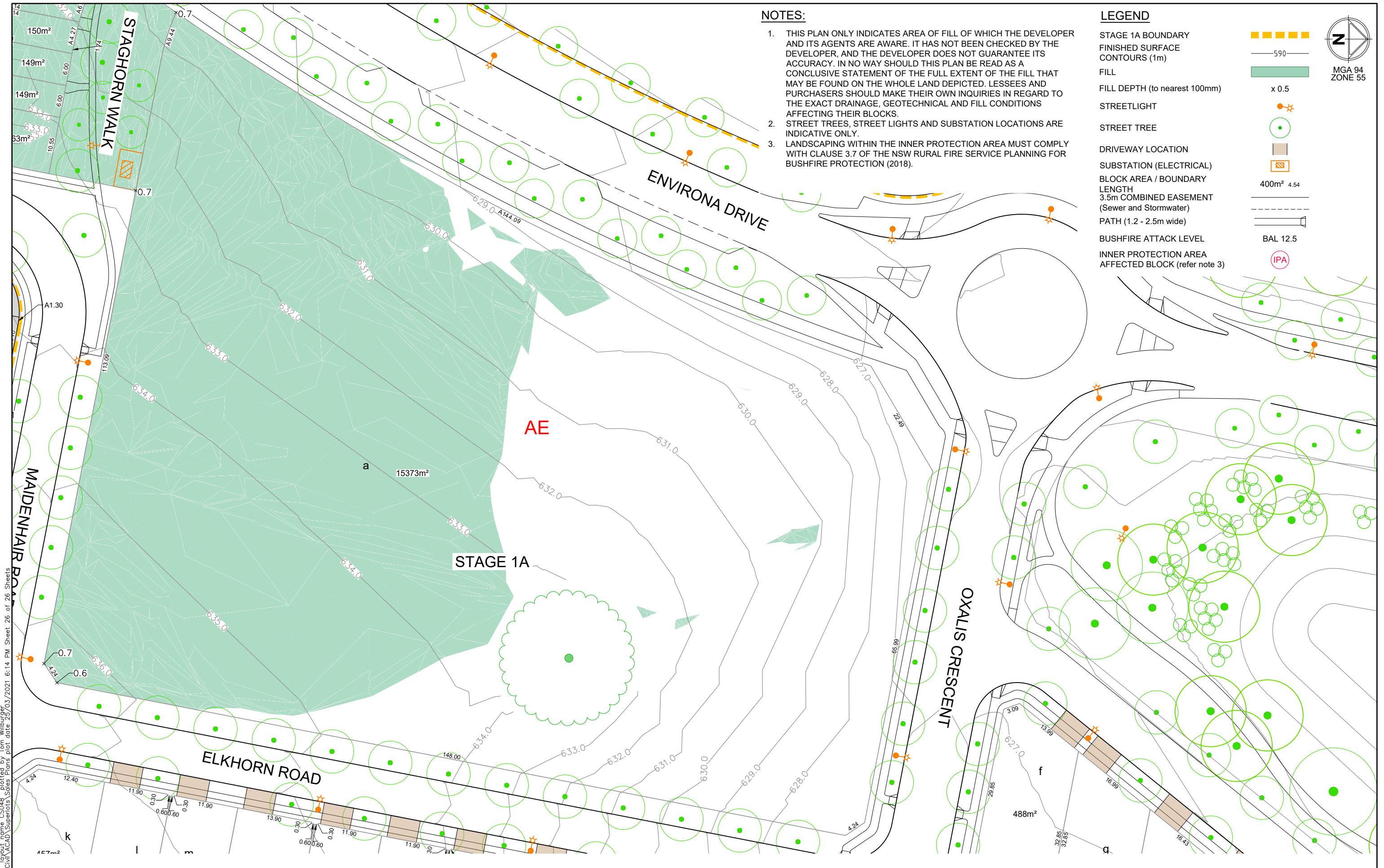
Lvl 1, 243 Northbourne Ave Lyneham
 Australian Capital Territory Australia T 61 2 6102 1000
 spiire.com.au ABN 55 050 029 635



Designed: [] Checked: []
 Authorised: [] Date: []

SOUTH JERRABOMBERRA SALES PLAN
 STAGE 1A
 SHEET 47 - SECTION AF
 QPRC
 VILLAGE BUILDING COMPANY

Dwg No: **306356CS047** Rev: **A**



NOTES:

1. THIS PLAN ONLY INDICATES AREA OF FILL OF WHICH THE DEVELOPER AND ITS AGENTS ARE AWARE. IT HAS NOT BEEN CHECKED BY THE DEVELOPER, AND THE DEVELOPER DOES NOT GUARANTEE ITS ACCURACY. IN NO WAY SHOULD THIS PLAN BE READ AS A CONCLUSIVE STATEMENT OF THE FULL EXTENT OF THE FILL THAT MAY BE FOUND ON THE WHOLE LAND DEPICTED. LESSEES AND PURCHASERS SHOULD MAKE THEIR OWN INQUIRIES IN REGARD TO THE EXACT DRAINAGE, GEOTECHNICAL AND FILL CONDITIONS AFFECTING THEIR BLOCKS.
2. STREET TREES, STREET LIGHTS AND SUBSTATION LOCATIONS ARE INDICATIVE ONLY.
3. LANDSCAPING WITHIN THE INNER PROTECTION AREA MUST COMPLY WITH CLAUSE 3.7 OF THE NSW RURAL FIRE SERVICE PLANNING FOR BUSHFIRE PROTECTION (2018).

LEGEND

- STAGE 1A BOUNDARY: [Orange dashed line]
- FINISHED SURFACE CONTOURS (1m): [Grey line with '590']
- FILL: [Green shaded area]
- FILL DEPTH (to nearest 100mm): [Green shaded area with 'x 0.5']
- STREETLIGHT: [Orange star symbol]
- STREET TREE: [Green circle with star]
- DRIVEWAY LOCATION: [Brown rectangle]
- SUBSTATION (ELECTRICAL): [Orange square with 'S']
- BLOCK AREA / BOUNDARY LENGTH: [Grey line with '400m² 4.54']
- 3.5m COMBINED EASEMENT (Sewer and Stormwater): [Dashed line]
- PATH (1.2 - 2.5m wide): [Grey line]
- BUSHFIRE ATTACK LEVEL: [BAL 12.5]
- INNER PROTECTION AREA AFFECTED BLOCK (refer note 3): [Red circle with 'IPA']



file name: 306356CS048.dwg, layout name: CS048, plotted by: Tom Wilburger, file location: G:\306356\ACAD\Superlots_Sales_Plans\plot_date_25/03/2021_6:14 PM_Sheet_26 of 26_Sheets

Rev	Description	Approved	Date
A	FIRST ISSUE	BC	24-03-21
	Amendments		

NOT TO SCALE



SOUTH JERRABOMBERRA SALES PLAN
STAGE 1A
SHEET 48 - SECTION AE
QPRC
VILLAGE BUILDING COMPANY

Drg No: **306356CS048** Rev: **A**