

HOUSE & LAND

retreat
RANGE

AMAZING VIEWS



ALLEGRA 187

\$787,350*



TOTAL (sqs)	20.14
TOTAL (m²)	187.09
WIDTH (m)	11.91
LENGTH (m)	18.87

**LOT 801 ZORNIA ST
JERRABOMBERRA**

LAND: 439 m²

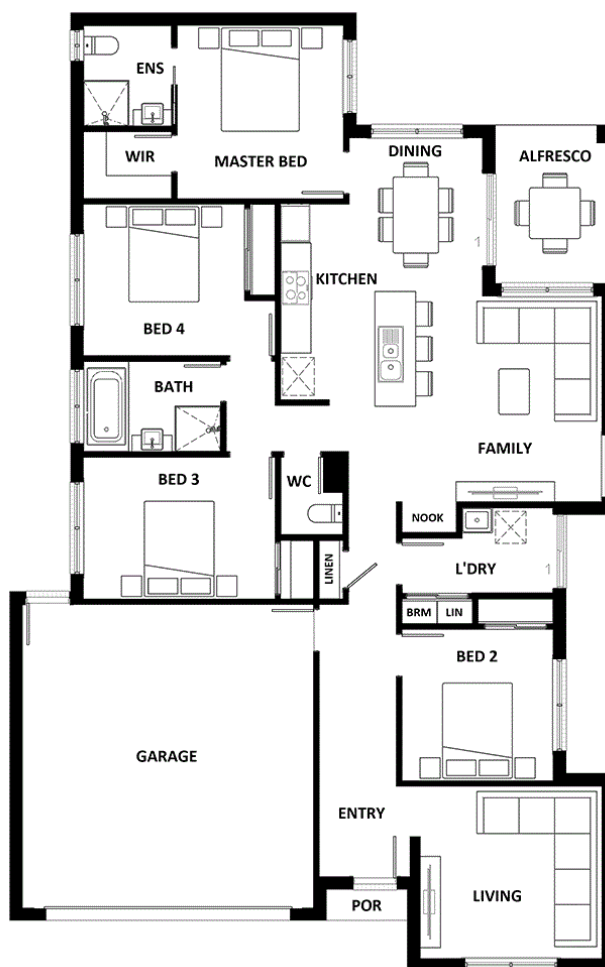
Features & Inclusions:

- 20mm Stone Benchtops
- 900mm Stainless Steel Appliances
- Double Glazed Windows
- Ducted Cooling
- Ducted Heating
- Overhead Kitchen Cabinets
- Site cost allowance
- Dishwasher

For more information contact:

Katina Core 0418 211 182

kcore.hotondohomes@gmail.com



*Dimensions, photographs, floor plans and façade images are approximate and for illustrative purposes only. They are not drawn to scale. The dimensions provided of "width" and "length" are the actual dimensions of the completed house including alfresco areas (where applicable). It is the home owner's responsibility to ensure that all applicable council regulations and estate requirements are met. Subject to land availability, pricing and site costs unless advertised as a "fixed price package". Driveway size based on builder's preferred siting. Check with your local builder for builder's standard range and inclusions. Photographs may include optional features or items that are not supplied by Hotondo Homes. Hotondo Homes reserves the right to change plans, specifications, materials and suppliers without notice. For more information visit your local builder or hotondo.com.au.

**Hotondo
Homes**