



ARTIST IMPRESSION



3



2



1+1

BLOCK SIZE 301m<sup>2</sup>

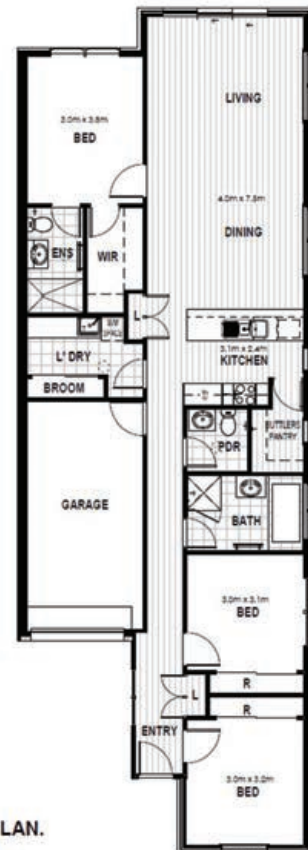
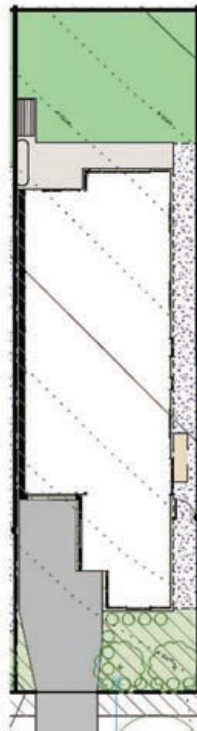
LIVING 124m<sup>2</sup>

GARAGE 21m<sup>2</sup>

**\$595,900**

**FOR YOUR  
KIND OF VALUE**

THE GOURMET



FLOOR PLAN.  
Scale 1 : 100



# Come home to YOUR Jerra in your very own free standing, single level home!



- ✓ Spotted Gum or Eastern Blackbutt hybrid flooring
- ✓ Zoned ducted heated and cooling
- ✓ Full height tiles to bathrooms and ensuites
- ✓ Fisher & Paykel appliance package (or equivalent)
- ✓ Walk-in-robe to Master bedroom
- ✓ Stone benchtop in kitchen
- ✓ Rainwater tank with greywater connection
- ✓ Your choice of two colour schemes



Your new Jerra home



Block L, Section AI



## For more information contact:

Vlada Piven  
0404 891 155 | [vpiven@villagebuilding.com.au](mailto:vpiven@villagebuilding.com.au)



### Disclaimer:

This flyer and the information contained within it is for information purposes only and does not constitute an offer, inducement, representation, warranty or contract. Prices correct at time of printing and are subject to change. Illustrations, images, artists impressions, plans, statements, figures, calculations, representations are indicative only and are subject to change. All prospective buyers are advised to carry out their own investigations in order to satisfy themselves as to all aspects of the development and should seek independent legal and financial advice in relation to all information contained herein. Current as at March 2021.