



\$379,000
FULLY FURNISHED

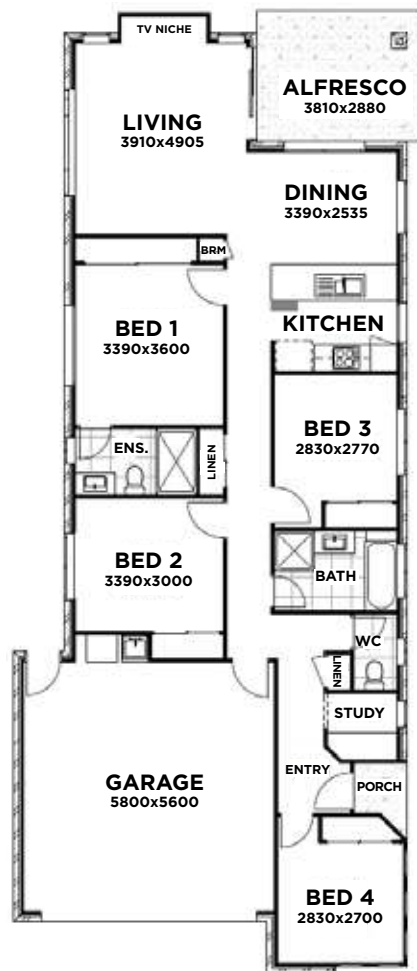
68 Palaszczuk Avenue,
Collingwood Park



Total Home Area 166.67m²
Block Size 320m²



woodlinks.com.au



WOODLINKS VILLAGE BRAND NEW HOME

\$379,000 FULLY FURNISHED

This brand new, cleverly designed home will surprise you with its many features and practical floor plan.

It features four bedrooms, two living areas, a study and a two-car garage, plus a generously sized backyard. Situated on a low maintenance 320m² block, overlooking the Goodna Creek Nature Reserve this home presents great value.

This home will be sold fully furnished - making it the perfect property for a First Home Buyer or Investor! Call Cameron now to arrange a private inspection - 0448 968 996

Woodlinks Village, developed by Village Building Co, is a masterplanned community that brings together affordable quality homes, green open spaces and easy access to established local amenities.



**Call or text Cameron to
arrange a private inspection
0448 968 996**



Location

- 8km to Springfield CBD
- 12km to Ipswich CBD
- 30km to Brisbane CBD

Connectivity

- Opposite WoodLinks State School
- Opposite Woolworths shops
- 5 minutes to Redbank Plaza Shopping Centre and Cinema Complex
- 5 minutes from Redbank Train Station

Community

- Predominately first home buyers, made up of couples and young families.

Infrastructure

- Ongoing public and private investment will continue to drive residential demand in the area.

Employment

- Ipswich is set to have the strongest job growth in South East Queensland over the 20 years to 2030 - Urbis.