

\$444,837*

Austin Facade

Domainehomes Home + Land

COLLINGWOOD PARK

Lot 441 Gem Drive

Woodlinks Village Estate

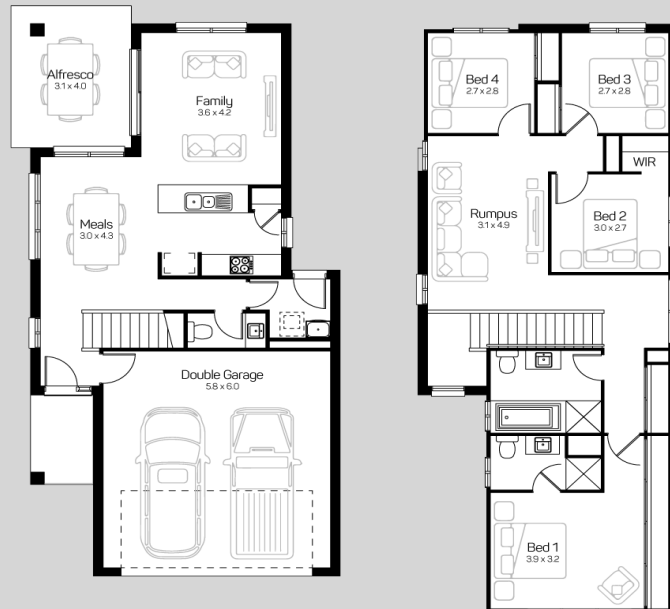
Land Size 320m²

Land Reg.

Home only package includes

- ✓ Upgraded facade
- ✓ Driveway with exposed aggregate finish
- ✓ Letterbox with A grade turf to front
- ✓ Concrete slab to alfresco
- ✓ Termite treated fame
- ✓ Insulation to walls and ceiling
- ✓ Ceiling fan to alfresco
- ✓ 450mm eaves – design Specific
- ✓ Tiles to porch
- ✓ Automatic panel lift garage door
- ✓ NBN conduit
- ✓ Standard site costs
- ✓ Independent quality inspection
- ✓ Carpet and tile from builders range
- ✓ Downlights to kitchen, family and meals
- ✓ TV antenna
- ✓ USB point to kitchen
- ✓ Onsite selection studio
- ✓ Lifetime structural warranty
- ✓ Plus much more...

GRENADA 22



FOR A LIMITED TIME ONLY!

FREE FLOORING*

 INCLUDED IN THE PRICE OF YOUR HOME

*Terms and Conditions apply. Images for illustrative purposes only. Domainehomes reserves the right to change the price without notice. E&OE. Domainehomes (QLD) Pty Ltd. ABN 19 080 788 969 BL No. 91387C. Land price:

4

2.5

2

Home Size 22.41sq

5/2/2020

13 64 69 or Domainehomes.com.au