



# THE VILLAGE

AT CORRIMAL

VILLA: 62,63,64&65

3



2



2



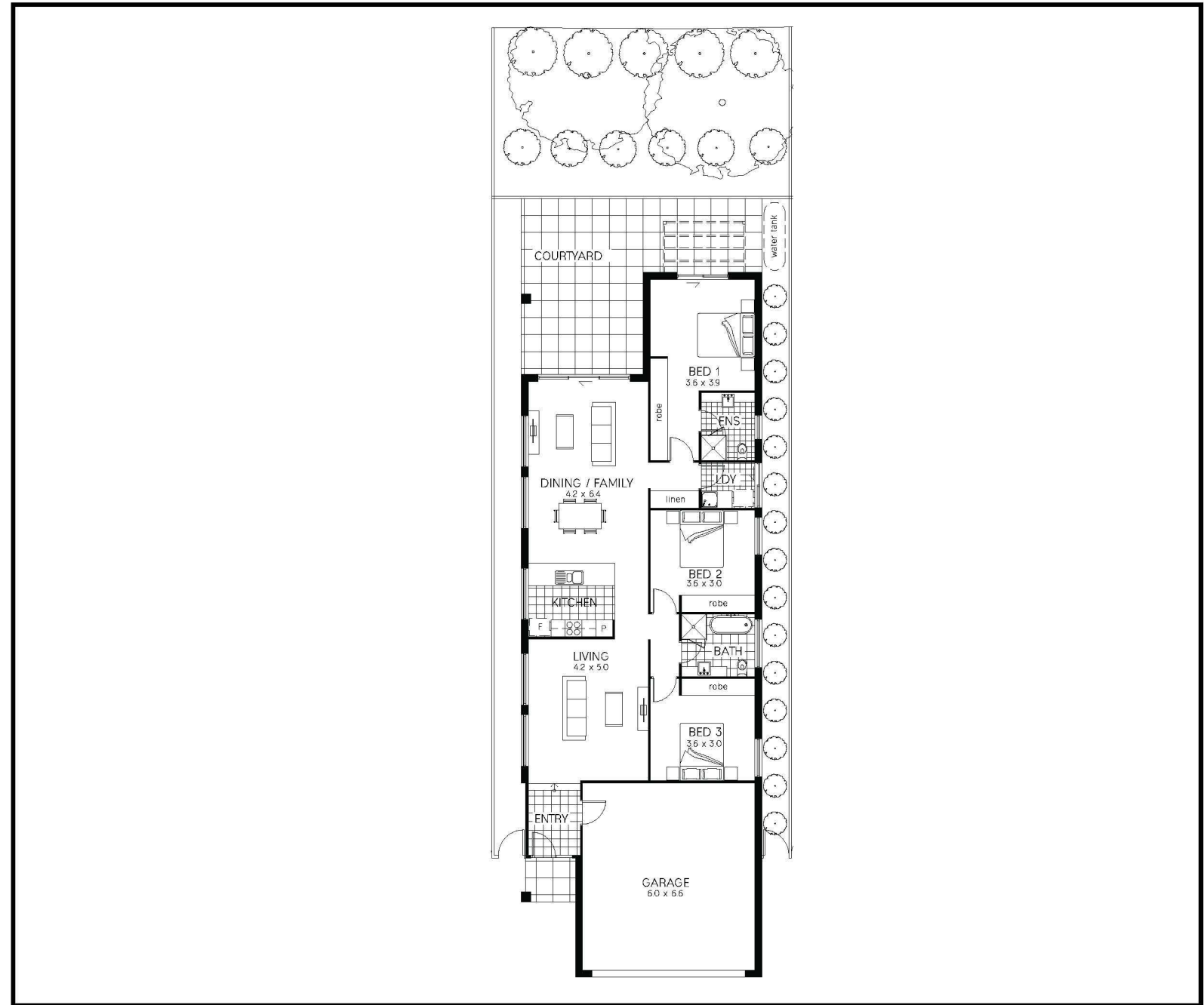
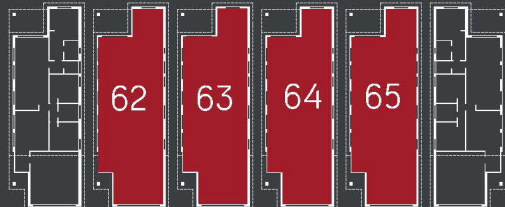
LIVING: 131m<sup>2</sup>

COURTYARD: 38m<sup>2</sup>

GARAGE: 40m<sup>2</sup>

TOTAL AREA: 209m<sup>2</sup>

ASPECT: NORTH



DISCLAIMER: Information and artists impressions contained herein have been provided as a guide only and are subject to change. November 2017

FOR MORE INFORMATION  
4283 2755  
[thevillageatcorrimal.com.au](http://thevillageatcorrimal.com.au)

