



# THE VILLAGE

AT CORRIMAL

LEVEL: 3  
APARTMENT: 58

3



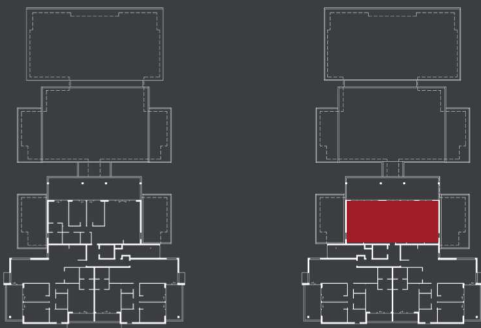
2



2



LIVING: 113m<sup>2</sup>  
BALCONY: 61m<sup>2</sup>  
TOTAL AREA: 174m<sup>2</sup>  
ASPECT: NORTH



DISCLAIMER: Information and artists impressions contained herein have been provided as a guide only and are subject to change. November 2017

FOR MORE INFORMATION  
4283 2755  
[thevillageatcorrimal.com.au](http://thevillageatcorrimal.com.au)

