



# THE VILLAGE

AT CORRIMAL

LEVEL: 3

APARTMENT: 30

3



2



2

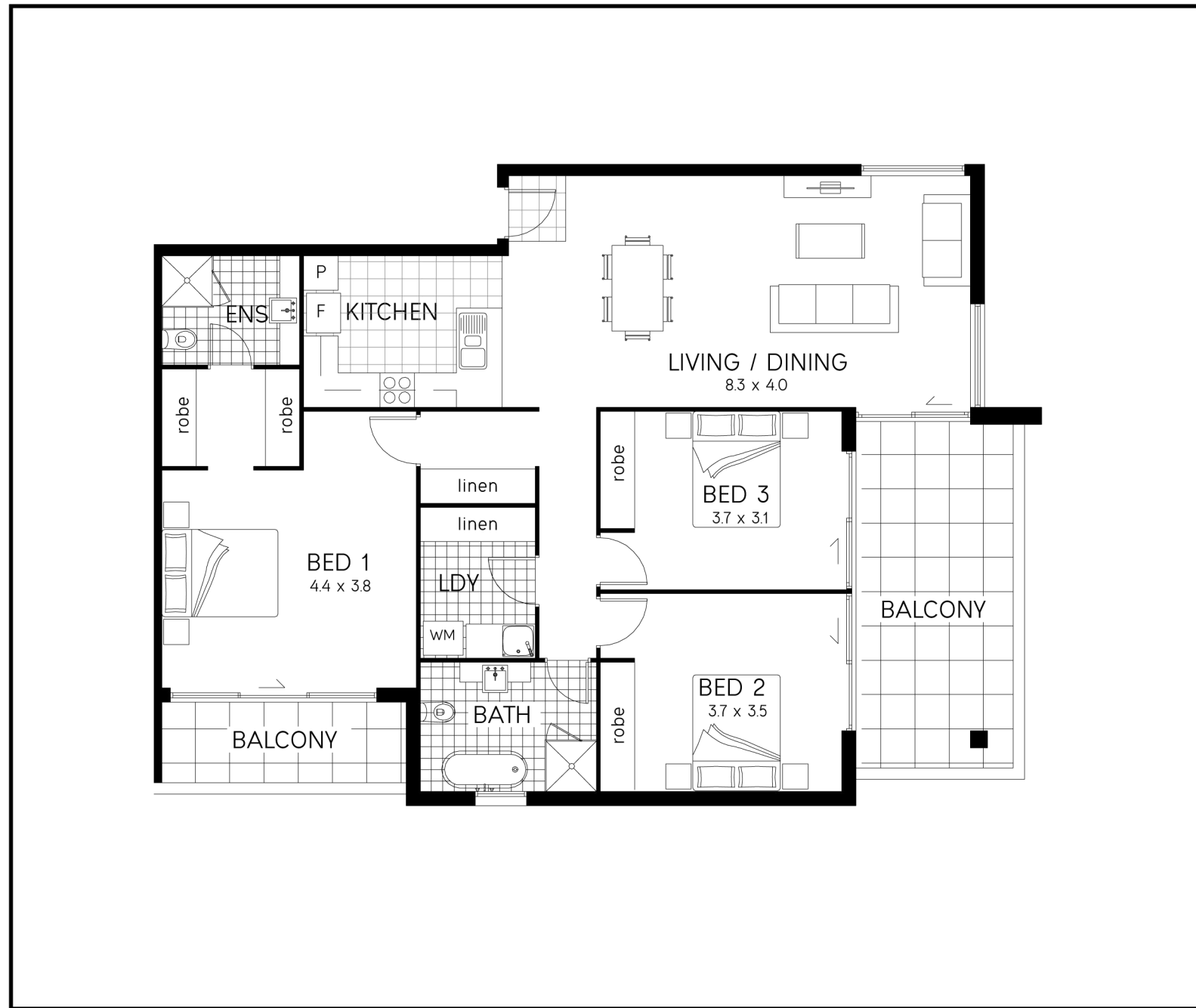
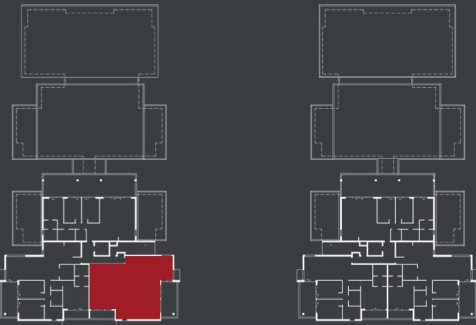


LIVING: 121m<sup>2</sup>

BALCONY: 17m<sup>2</sup> & 6m<sup>2</sup>

TOTAL AREA: 144m<sup>2</sup>

ASPECT: SOUTH/EAST



DISCLAIMER: Information and artists impressions contained herein have been provided as a guide only and are subject to change. November 2017

FOR MORE INFORMATION  
4283 2755  
[thevillageatcorrimal.com.au](http://thevillageatcorrimal.com.au)

