

HOUSE & LAND PACKAGE

\$424,598



MIA 233

Woodlinks Estate

Collingwood Park

Land Size - 448m² House Dimensions - 11.3m x 22.74m



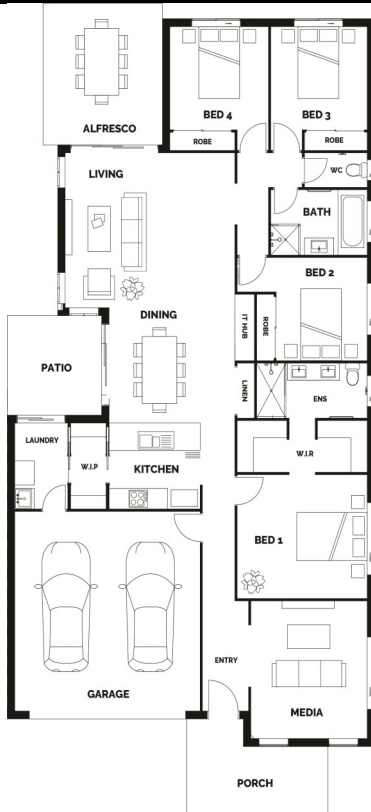
4



2



2



House Package Includes:

- Façade Pictured Included - Others Available
- Stone Benchtops Throughout
- Stainless Steel Appliances
- LED Downlights Throughout
- Ceiling Fans
- Carpets & Tiles or Timber Look Vinyl Flooring
- Semi Frameless Shower Screens
- Driveway, Letterbox & Clothesline
- Exposed Aggregate Porch and Alfresco
- Fencing and Landscaping Allowance
- Full NBN Provisions
- Personalised Colour Consultation
- H1 Slab
- Split System A/C to Living

House Price- \$232,598

Land Price - \$192,000

FLOOR AREA

Living	163.85m ²
Garage	35.76m ²
Alfresco	15.12m ²
Porch	10.26m ²
Total	233.37m ²

RESI DESIGN
HOMES

Contact Kam- 0447 174 743 or Kam@residesignhomes.com.au

www.residesignhomes.com.au