

HOUSE & LAND PACKAGE

\$415,904



GRACE 212

Woodlinks Estate

Collingwood Park

Land Size - 420m² House Dimensions - 11.20m x 22.51m



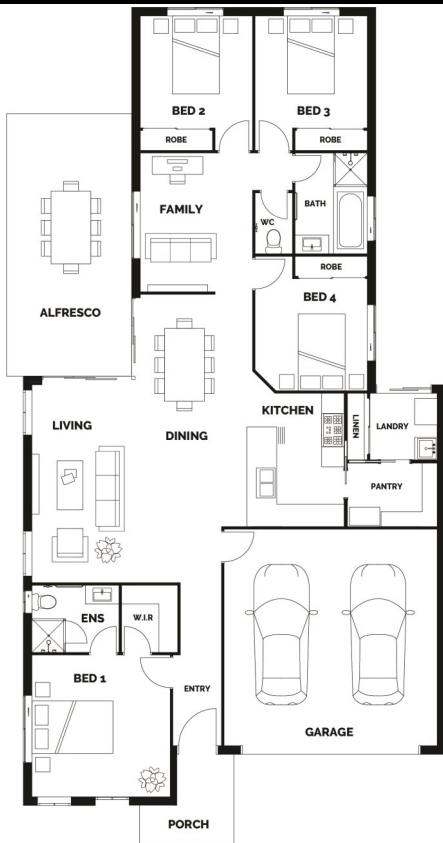
4



2



2



House Package Includes:

- Façade Pictured Included - Others Available
- Stone Benchtops Throughout
- Stainless Steel Appliances
- LED Downlights Throughout
- Ceiling Fans
- Carpets & Tiles or Timber Look Vinyl Flooring
- Semi Frameless Shower Screens
- Driveway, Letterbox & Clothesline
- Exposed Aggregate Porch and Alfresco
- Fencing and Landscaping Allowance
- Full NBN Provisions
- Personalised Colour Consultation
- H1 Slab
- Split System A/C to Living

House Price- \$223,904

Land Price - \$192,000

FLOOR AREA

Living	152.66m ²
Garage	36.19m ²
Alfresco	19.43m ²
Porch	8.12m ²
Total	216.40m²

RESI DESIGN
HOMES

Contact Kam- 0447 174 743 or Kam@residesignhomes.com.au

www.residesignhomes.com.au