

HOUSE & LAND PACKAGE

\$378,319



ARCHIE 177

Woodlinks Estate

Collingwood Park

Land Size - 375m² House Dimensions - 10.60m x 18.85m



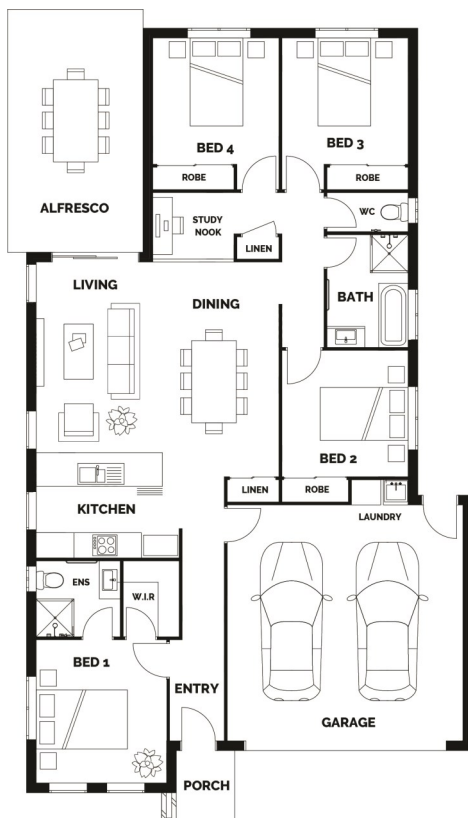
4



2



2



House Package Includes:

- Façade Pictured Included - Others Available
- Stone Benchtops Throughout
- Stainless Steel Appliances
- LED Downlights Throughout
- Ceiling Fans
- Carpets & Tiles or Timber Look Vinyl Flooring
- Semi Frameless Shower Screens
- Driveway, Letterbox & Clothesline
- Exposed Aggregate Porch and Alfresco
- Fencing and Landscaping Allowance
- Full NBN Provisions
- Personalised Colour Consultation
- H1 Slab
- Split System A/C to Living

House Price- \$196,319

Land Price - \$182,000

FLOOR AREA

Living	120.91m ²
Garage	35.24m ²
Alfresco	18.58m ²
Porch	2.63m ²
Total	177.36m²



Contact Kam- 0447 174 743 or Kam@residesignhomes.com.au

www.residesignhomes.com.au