

The Atsley

Lot 368, Woodlinks village, Collingwood park



TURN KEY HOUSE AND LAND FROM \$369,900.00

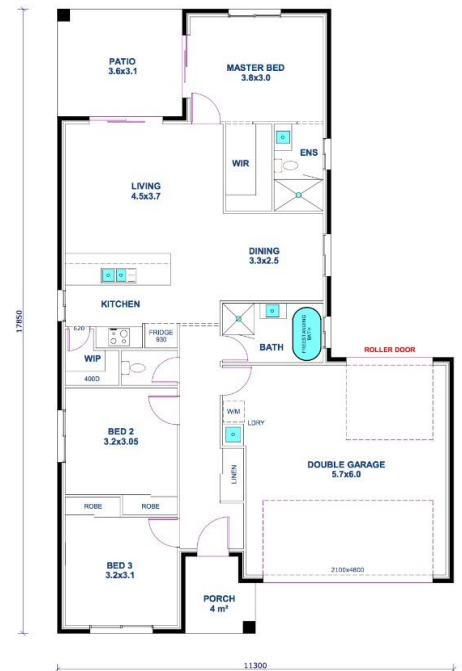
Home Size: 158.63sqm  3  2  2

LOT 368 Frontage 12.5M Size :375sqm

TURN KEY PACKAGE INCLUDES

- ❖ 2590mm ceiling height
- ❖ Samsung 5kw Split system Air-Condition
- ❖ Stone benchtops to Kitchen
- ❖ Driveway
- ❖ Fencing
- ❖ 1500 Freestanding Bathtub
- ❖ Landscaping

Phone Dante on **0431 094 137**
or email **dante@homesbycma.com.au**



Land not supplied by CMA DEVELOPMENTS PTY LTD, land developer terms and conditions apply. Fixed Price packages are only available for the specific lot and home advertised. Land prices and availability are subject to change without notice. Additional costs may incur if there are bushfire or acoustic requirements. This package is not available in conjunction with any other promotion and is subject to developer approval. Structural variations allowed with additional fees applied. The determined house siting on the lot is at the discretion of Homes by CMA only. Homes by CMA reserves the right to withdraw any Fixed Price Home & Land Package at any time without notice. Images used in this house and land package are for marketing purposes only and do not reflect the size of the block. Package is current at time of publication. The promoter is CMA DEVELOPMENTS PTY LTD. QBCC Licence 1162948