

HOUSE & LAND PACKAGE

\$334,136



House Price - \$167,136 | Land Price - \$167,000



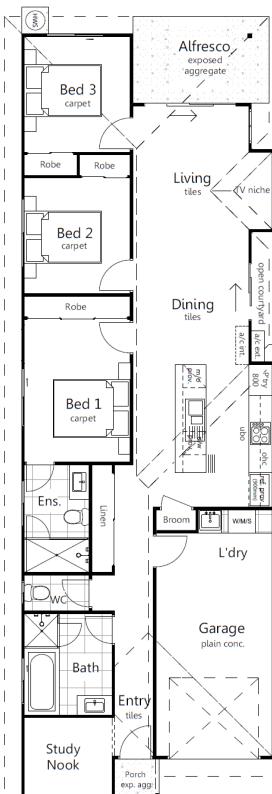
3



2



1



House Package Includes:

- Façade as pictured
- H1 Class Engineered slab
- Stone Benchtops Throughout
- Stainless Steel Appliances
- LED Downlights Throughout
- Ceiling Fans
- All Floor coverings, Carpets & Tiles
- Semi Frameless Shower Screens and Shower Niches
- Driveway, Letterbox & Clothesline
- Exposed Aggregate Porch and Alfresco
- Colorbond Roof
- Full NBN Provisions

FLOOR AREA

Living	97.13m ²
Garage	19.20m ²
Alfresco	7.92m ²
Porch	1.15m ²
Total	125.4m ²

Lot 184 Palaszczuk Ave
"Woodlinks Village"
Collingwood Park, QLD 4301



RESI DESIGN
HOMES