

# FIXED PRICE, ALL INCLUSIVE PACKAGE BRAND NEW HOME, UNDER CONSTRUCTION!



FIXED PRICE  
**\$409,000**

## Lot 409 Woodlinks Village Cleo 150

The Cleo is carefully designed to make amazing use of space while still providing creature comforts. The contemporary kitchen with ample walk in pantry opens smoothly onto the family room and the meals area which has views through to the alfresco and outdoors. The generous master bedroom has a large built in robe and thoughtfully designed ensuite and is a haven located at the rear of the home and away from the other bedrooms. Single car accommodation makes this the perfect home for 10m frontage lots.

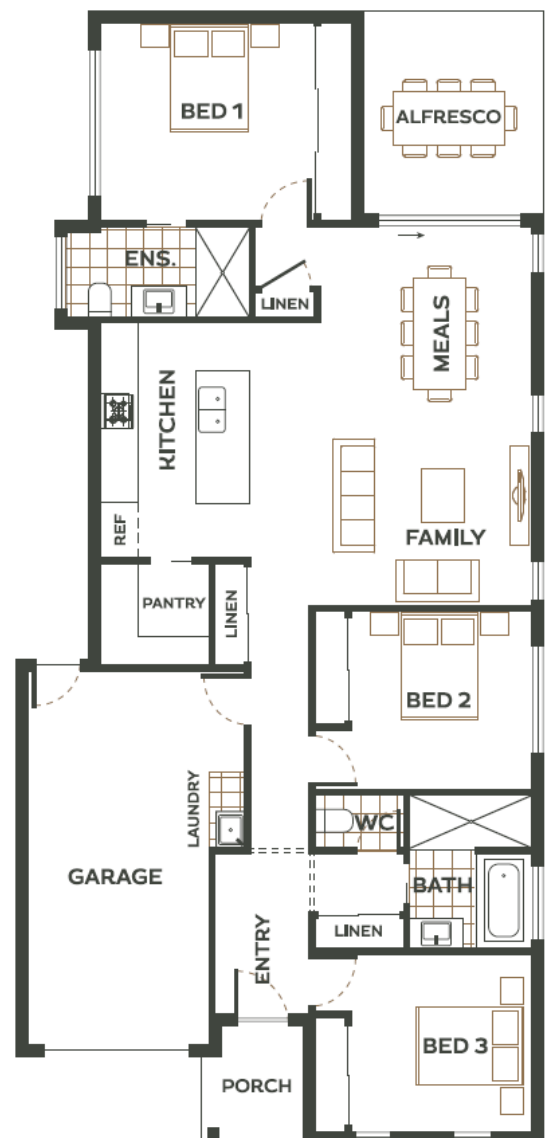
- ✓ Fixed price, completed home
- ✓ NBN and natural gas ready
- ✓ Full fencing and landscaping
- ✓ Designer front façade
- ✓ Higher ceilings (2590mm) throughout
- ✓ 2 x split cycle air-conditioners
- ✓ Ceiling fans
- ✓ LED downlights throughout



Total Home Area: 149.97m<sup>2</sup>

Block Size: 320m<sup>2</sup>

[woodlinksvillage.com.au](http://woodlinksvillage.com.au)



\*Fixed Price packages are only available for the specific lot and home advertised. Prices and availability are subject to change without notice. All illustrations & floor plans are artistic impressions & should only be used as a visual aid, colours are subject to change. September 2021.

# WOODLINKS VILLAGE

## Collingwood Park

Woodlinks Village developed by Village Building Co, is a master planned community that brings together affordable quality homes, green open spaces and easy access to established local amenities.

Located within easy walking distance, Woodlinks residents have direct access to the Collingwood Park Woolworths for everyday essentials. A short walk across the road you'll also find WoodLinks State School, one of the most sought after schools in the region.

Over 30% of the 78-hectare community is dedicated to parklands and open spaces. So, you can be sure the carefree family lifestyle and special pocket of Woodlinks Village you purchase today will stay that way for future generations to enjoy.

With established shopping centres, schools, transport plus so much more on your doorstep, Woodlinks Village is the perfect community to call home.

Get in touch with our friendly team today on  
**0448 891 136** to find out more.



Woodlinks Village delivers an exceptional family-oriented lifestyle in a safe, friendly community



### Location

- 8km to Springfield CBD
- 12km to Ipswich CBD
- 30km to Brisbane CBD

### Connectivity

- Opposite WoodLinks State School
- Opposite Woolworths shops
- 5 minutes to Redbank Plaza Shopping Centre and Cinema Complex
- 5 minutes from Redbank Train Station

### Community

- Predominately first home buyers, made up of couples and young families.

### Infrastructure

- Ongoing public and private investment will continue to drive residential demand in the area.

### Employment

- Ipswich is set to have the strongest job growth in South East Queensland over the 20 years to 2030 - Urbis.